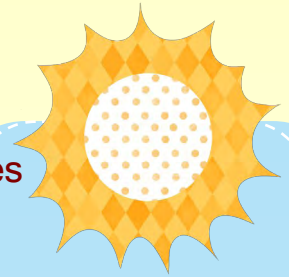




# National Relief Charities

Strong, Self-Sufficient Native American Communities



Summer 2015 Volume 10, Issue 4

## Open House 2015: What a Success!



Thank you for going 'Hog Wild' with us during our 2015 Open House! This year was a success and we owe it all to you— our Program Partners! Thank you for all you do in your communities! A special thanks to Ed Vocu for coordinating the event and to Mike Richardson with Mike's Grill and Catering for preparing a mouth-watering lunch!

See you all next time!



### Inside this Issue

- Open House ..... 1
- Honor Roll..... 2
- Summer Profile ..... 2
- Community Investment Projects ..... 3
- TOMS Shoes..... 4

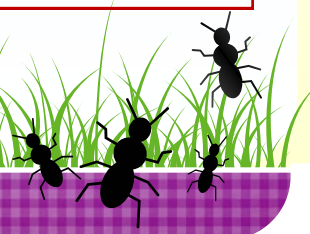
### Save the Date!



September 15—  
Thanksgiving  
Request Due



October 15—  
Christmas  
Request Due





# NRC Honor Roll



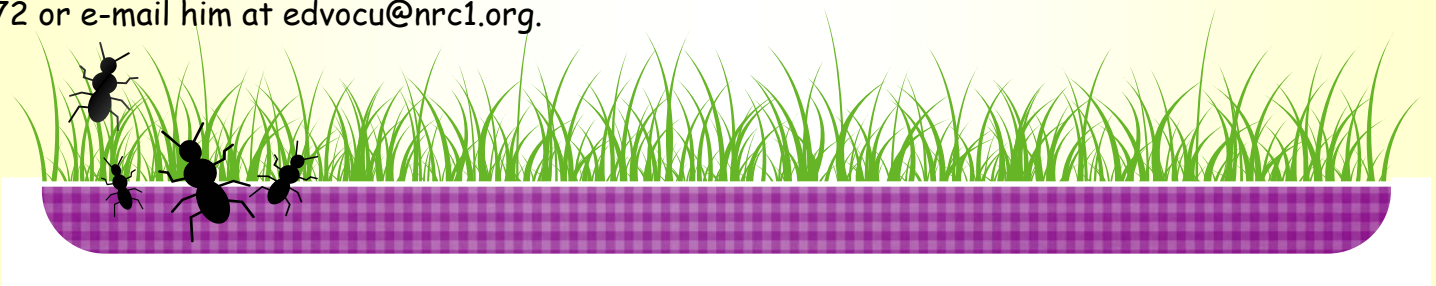
<u>Reservation</u>	<u>Program Name</u>	<u>Contact</u>	<u>Services Utilized</u>	<u>Program Since</u>
Northern Cheyenne	NC St. Labre Y&FS	Dorcella Rowland	Incentive, Residential, Easter, Christmas, Thanksgiving	February 2003
Flathead Nation	FN Kicking Horse Job Corp	Christine Old Coyote	Residential	April 2005
Turtle Mountain	TM Youth Alcohol Program	Susie Clearwater	Healthy Living, Bulk, Easter, Christmas	November 2013
Cheyenne River	CR Cheyenne Eagle Butte School	Connie Knight	Easter, Bulk, Community Events, Christmas, School Supplies	May 2009
Crow Creek	CC Family Enrichment Program	Lynn Harrison	Healthy Living	October 2007
Standing Rock	SR Early Childhood Tracking	Ron Martel	Literacy, Community Events, Healthy Living	June 2014
Cheyenne River	CR CRST Emergency Youth Shelter	Willie Ducheneaux	Residential	March 2008
Pine Ridge	PR OST Health Education	Karen Red Star	Community Events & Christmas	May 2010
Rosebud	RO Head Start	April Grass	Incentive, Easter, Community Events	February 2003
Ponca Tribe of Nebraska	PO Northern Ponca Housing Authority	Beverly Wright	Healthy Living	December 2009

## Summer Profile: Ed Vocu, Program Partner Support Specialist



Ed Vocu is the Program Partner Support Specialist at the NRC Plains office. He is a member of the Oglala Sioux Tribe and has been with NRC for 7 years. The main part of his job is to support our Program Partners in anything they need help with. So if you need help with anything from making a poster to figuring out how to navigate our website give him a call and he will be glad to help. He also gets the not so fun task of chasing down people who have not yet reported. So please send in your reports on time. Ed is also in charge of a few special projects with the biggest one being our Thanksgiving service.

If you ever have any questions or just feel like giving him a hard time please call Ed at 1-866-556-2472 or e-mail him at [edvocu@nrc1.org](mailto:edvocu@nrc1.org).



# Community Investment Projects

Community Investment Projects is a program that helps with the startup of new projects in the community that will have a lasting positive effect on the community. The types of projects we are interested in supporting are ones that address positive activities for youth, health (all aspects of health in general), nutrition or emergency preparedness.

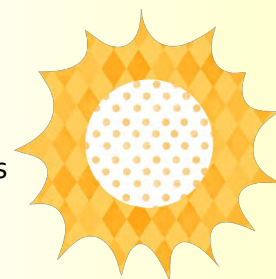
We are currently taking applications for the program. Remember that an application does not mean an automatic approval. There is a process and it will be reviewed by a panel of NRC staff once submitted. If approved the project will receive \$1500 worth of consulting and up to \$2000 in cash award for project expenses.

## Eligibility

- Be new or expand on a current project
- Involve and benefit the tribal community
- Address an issue in the community with a potential **long-term healthy and positive** solution
- Be completed within six-month funding period (However, funding priority is given to projects with the potential to be sustained long after the funding period)

**NRC will support a range of projects, organizations, and individuals; however we are particularly interested in projects that:**

- Reflect the values of giving, thoughtfulness, innovation, and determination
- Are grassroots in nature (led and supported by the people in the community)
- Provide an important service or resource to improve life for community residents
- Reflect community wide thinking and cooperation
- Promote community participation



## Examples of Eligible Projects

A project that addresses social difficulties which will ultimately impact communities in a positive light.	Projects to address the impact of social factors such as employment or education
Projects that support the education of and support early childhood care, health, and education services.	Projects that increase opportunities for physical activity for youth
Projects that increase the financial literacy of the targeted population	Projects that increase access to healthy, affordable foods for children and families

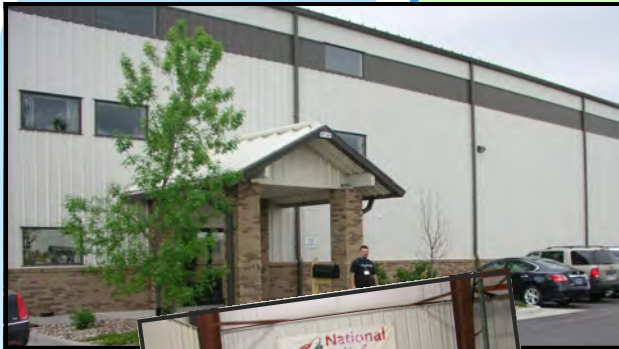
If you are interested or know someone who might be, please have them contact Marie or Andrew at 866-556-2472 for an application. We can also be reached by email. Marie ([mkeller@nrc1.org](mailto:mkeller@nrc1.org)) or Andrew ([abentley@nrc1.org](mailto:abentley@nrc1.org)).

It's that time of the year!

# TOMS

Once again, National Relief Charities will be visiting schools in our service area to deliver TOMS shoes to children at the schools. We enjoy the quality time spent with the school staff and students.

NRC POC is Eric Lowe at [Elowe@nrc1.org](mailto:Elowe@nrc1.org)



## NRC's Mission & Vision:

**Our Mission:** Serving immediate needs.  
Supporting Long Term Solutions.

**Our Vision:** Strong Self-Sufficient Native American Communities.

If you find yourself in Rapid City, please stop by and visit us. Coffee is always on!

We would love to see you!

[www.nrcpartners.org](http://www.nrcpartners.org)

2401 Eglin Street

Rapid City, SD 57703

Phone: 605-399-9905

