



PARTNERSHIP WITH
NATIVE AMERICANS[®]
www.NativePartnership.org

Serving immediate needs,
supporting long-term solutions.

SOUTHWEST NEWSLETTER

APRIL 2024

MESSAGE FROM THE PRESIDENT JOSHUA ARCE, PWNA PRESIDENT & CEO



TABLE OF CONTENTS

Message from the President, Partner Spotlight	... Page 1
Long-term Solutions, Deadlines, Upcoming Events	... Page 2
Featured Products, Service Highlight	... Page 3
Impact by the Numbers, Contact Information, Education Update	... Page 4



Greetings Program Partners!

With Easter behind us, clocks moved forward, and daylight hours getting longer, we are engaged in spring activities. Some might be tilling and planting, while others may be thawing out and preparing for weather-related emergencies.

The seeds we plant now will be our harvest in the fall. Our preparations during blue skies will ease the burden when gray skies fall upon us. The diligence, steadfast work, and investment we make now will be our fruits (and vegetables) later this year.

Thank you for your continued partnership, and we look forward to supporting your communities as best as possible. I wish you, your families, friends, and communities many blessings this year.

Many A-ho's!

Joshua Arce, PWNA President & CEO
Prairie Band Potawatomi

PARTNER SPOTLIGHT

Program partner Danette J. with the Quechan Head Start in Winterhaven, California, utilizes PWNA services to promote family involvement and early childhood development. Danette is a long-time partner of PWNA. Out of a desire to support the Head Start program and the families in her community, she has used these PWNA services for more than 15 years: Healthy Living, Community Events and Holiday (Christmas). Although Danette has seen many changes over time, she sees PWNA as a crucial resource for engaging with families and improving outcomes for the children.

Danette believes the distribution of Healthy Living incentives helps ensure consistent family engagement. "They love it, they're always thankful!" shared Danette. She sees families most excited to receive paper towels, toilet paper, and cleaning supplies – items that are becoming increasingly difficult to fit into many families' budgets. Danette remains grateful to those who support SPWNA, saying, "To all the people who donate, we really appreciate what you're doing!"





LONG-TERM SOLUTIONS EMERGENCY PREPAREDNESS SERVICE

In 2023, PWNA achieved significant milestones in our mission to enhance emergency preparedness in Tribal communities, across both Southwest and Northern Plains remote reservation communities. In the Southwest, the emergency preparedness components had participants completing CERT (Community Emergency Response Team) training, Active Shooter, Family Emergency Plan, and First Aid, CPR, and AED training and certification to support long-term sustainability. The trainings are of vital, life-critical importance in rural communities where people consistently report fears and frustrations about not having access to adequate services (including 911, emergency, police, etc.) and the response time is 45 minutes to an hour, or sometimes much longer or none at all. This year we will be supporting several Tribal communities in need of First Aid, CPR and AED certified training.

If you are interested in collaborating in emergency preparedness service training for your community, please call (602) 340-8050 or email kwilson@nativepartnership.org and Kayleen will connect with you to determine whether PWNA can support your needs.



REPORT DEADLINE REMINDERS

Due 30 days after delivery:

- Healthy Living
- Community Events
- Food Pantry

Due 90 days after delivery:

- Standard Food
- Residential
- Animal Welfare



SAVE THE DATE UPCOMING EVENTS



American Indian Education Fund (AIEF) Scholarship Deadline: April 4

Your application must be submitted by April 4th. You can submit the form at www.AIEFprogram.org or contact Kayleen Wilson, LTS SW Manager at kwilson@nativepartnership.org or (877) 281-0808

Great Non-Profit Reviews Deadline: April 30

PWNA would like to give you, our partners, an opportunity to provide a review of PWNA that donors can read. Please contact PWNA and we'll email you directions on how to complete a review.

School Supplies Deadline: May 1

Pre-K to 12 schools and Head Starts are eligible to submit a request for the School Supplies service. PWNA provides a variety of items for every child in the school such as notebooks, rulers, pencils, folders, crayons, backpacks, and other school supplies. Distribution events could be Back-to-School events or student registration/orientation or during the first weeks of school.



FEATURED PRODUCTS



The following items are available in our warehouse. Please be sure to ask about them when you complete the follow-up call with your Partnership Development Coordinator:

- Books – science fiction and weather
- Baby items – diaper bags, bottles, and changing mats
- Spa Brushes
- Men's Beard Coloring Kits
- Stuffed Toys



SERVICE HIGHLIGHT COMMUNITY EVENTS

Community Events is a PWNA service meant for those who encourage community members to work together toward positive changes that enrich their lives and the lives of others. This could include events such as environmental projects (trash pickups, ditch cleaning, Arbor Day, etc.), trainings/conferences that enhance the lives of children, adults, and Elders, Health awareness screenings or fairs, and even animal spay and neuter clinics through our RAR program.

Eligibility for the Community Events service:

- Your program must be part of an established group/organization, and serve a large group (community).
- Participants must attend the event and sign the distribution log (sign-out sheet) for incentives received.
- The event has a defined purpose and provides information/education to the participants.
- Incentives provided for the event must not be shared with other services/programs or distributed at any profit-generating event.

Accurate and complete reporting is essential for Community Events support – your report is due 30 days from your event date. To start using the Community Events service, please download the form from our partner site at www.swnativepartners.org, fill it out, and submit the request. Once received, PWNA staff let you know if your request was approved or declined. If approved, PWNA staff will review the goals with you and let you know when your request will be processed and/or delivered.

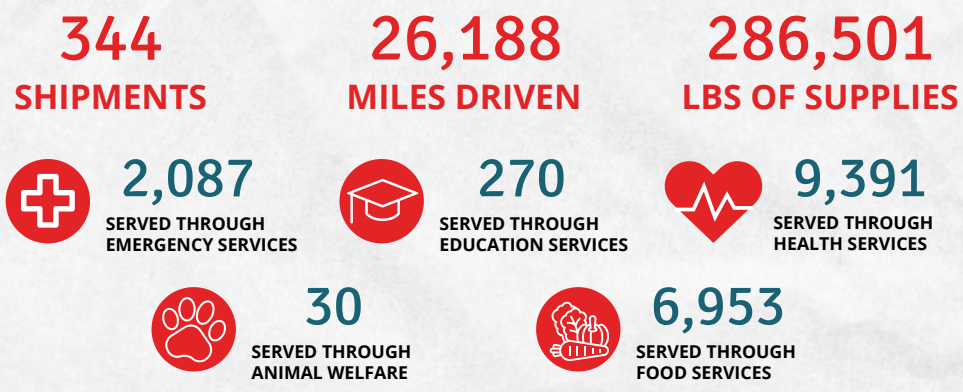


AIEF 4D Graduates
October 2023, Tempe, AZ



IMPACT BY THE NUMBERS SEE THE DIFFERENCE YOU ARE MAKING

Collaborating with amazing Program Partners like you has helped us work efficiently and effectively for more than 30 years on remote reservations. Here's how partnering with dedicated friends like you continues to make a positive impact in Tribal communities (through February 2024):



CONTACT US

Richard Miller

Material Services
Director of Programs

📞 602.340.8050 Ext. 301
✉️ rmiller@nativepartnership.org

Kayleen Wilson

Long-term Solutions Manager, SW

📞 602.340.8050 Ext. 304
✉️ kwilson@nativepartnership.org

1310 E Riverview Dr. Phoenix, AZ 85034
www.SWNativePartners.org
877.281.0808

PWNA only delivers needed goods and services. We want to ensure the products we send fit your needs. If they do not, please call us so that we may better serve you.

“[The Healthy Living incentives] really helped us bring in the people with assistance that we couldn't provide through our program.”
- Kathy N., Zuni, NM

EDUCATION UPDATE

**AIEF 2024-2025 TOM RUSSELL
IMPACT AWARD SCHOLARSHIP
FOR DEGREES IN EDUCATION**

Visit www.AIEFProgram.org for more information.

Applications Open: April 5th, 2024
Deadline: May 31st, 2024

See attached flyer for more details.

