



# ALLOY HARDFACING

*Evolving to meet YOUR Needs....*

## **Screw Conveyors**

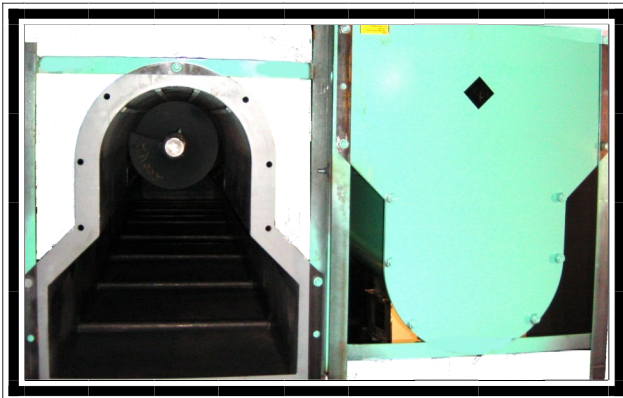
Alloy-design Screw Conveyors are complete solutions. They are assembled from the finest components available, assembled and test run prior to shipment. If shipping requires the units be partially disassembled, they are match marked and ready for re-connection on arrival.

### **Quality Components:**

All components used by Alloy meet or exceed the SEMA standards for Screw Conveyor components.

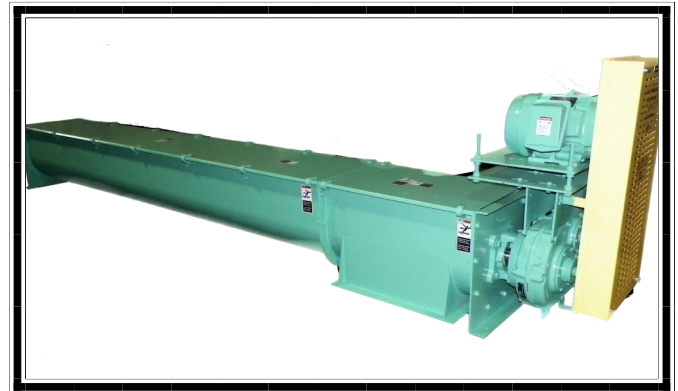
### **Drive Components:**

All Alloy drives are sized to meet Class II requirements minimum. This assures you these components will meet your needs well beyond the warranty period. When it comes to drives Alloy uses Dodge® shaft mounted and Dodge Screw Conveyor drives whenever possible due to their excellent reputation for quality and distribution system. If your plant has standardization on other components, Alloy is pleased to bid them as an option. Options include variable speed and foot mounted drives by other quality PTD suppliers.



Alloy can supply your conveyors regardless of the application, design or complexity, while we hesitate to say we have seen it all, we have seen a vary wide range of specialty applications. We know what works and what doesn't, let us hep

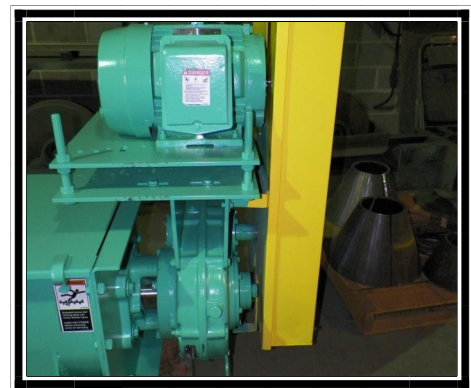
Alloy supplies dozens of conveyors in a typical year, ranging from 6" to 24" diameter, with our assembly experience and buying power you are assured of pricing that is more than just "competitive".



### **Options:**

Alloy offers too many options to list them all here, but here are a few of the most-asked for options:

- ◆ Single and Double Hold Downs
- ◆ Wear Bars and Hanger Bearings
- ◆ Hot Pinned Shafts
- ◆ Heavy Helicoid or Sectional Flights
- ◆ Packing Glands
- ◆ "U", Flare and Keyhole Troughs



**ALLOY HARDFACING & ENGINEERING CO., INC.**

20425 Johnson Memorial Drive, Jordan, MN 55352

800-328-8408 or 952-492-5569 Fax 952-492-3100

[www.alloyhardfacing.com](http://www.alloyhardfacing.com) or email [Salesinfo@alloyhardfacing.net](mailto:Salesinfo@alloyhardfacing.net)