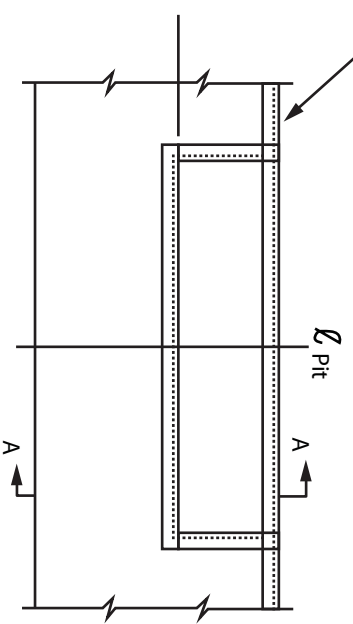


\*NOTE: 1  
DIM. "A" MAT'L: A-36C.

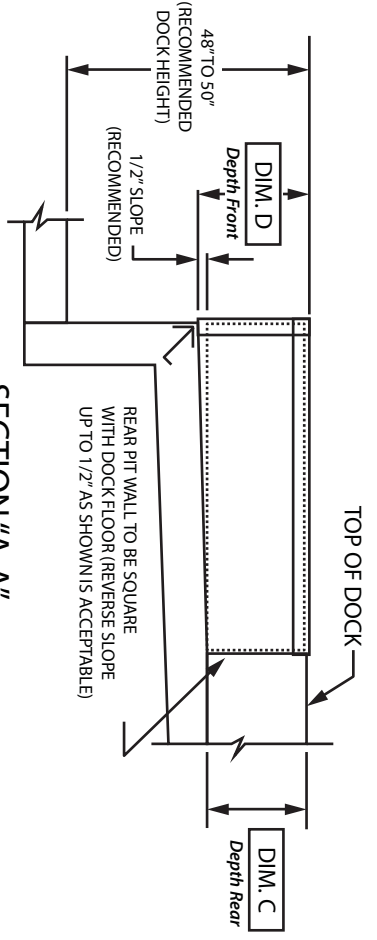


FRONT ELEVATION  
DIM. "A" MAT'L: A-36C. STEEL

\*NOTE 1: Angle 3"x3"x3/16"x20"  
Minimum Length Run  
Continuous Pit to Pit  
(Supplied By Others)

VARIABLE DIMENSIONS				
MODEL	"A"	"B"	"C"	"D"
6'W X 6'L	74"	63"	19-1/2"	20"
6'W X 8'L	74"	87"	19-1/2"	20"
6'6"W X 6'L	80"	63"	19-1/2"	20"
6'6"W X 8'L	80"	87"	19-1/2"	20"
7'W X 6'L	85"	63"	19-1/2"	20"
7'W X 8'L	85"	87"	19-1/2"	20"
6'W X 10'L	74"	111"	23-1/2"	24"
6'6"W X 10'L	80"	111"	23-1/2"	24"
7'W X 10'L	85"	111"	23-1/2"	24"

*Insert specific job dimensions form chart*



SECTION "A-A"  
MAT'L: A-36 C. STEEL

**TOLERANCES:**  
Inch Dimension = 1/16"  
Decimal Dimension = + .005  
Angles = °1



☎ : 800-741-1258  
☎ : 866-709-2802  
✉ : Sales@loadingdocksupply.com  
🌐 : www.loadingdocksupply.com