

From Ordinary To Extraordinary



The Alchemy of The Soul

The Great Lakes Retreat

Sunday, July 19 - Friday, July 24, 2020  
Olivet College - Olivet, Michigan



## The Great Lakes Retreat

**We** invite you, seekers of all faiths, to gather for six days at The Great Lakes Retreat. Individuals with diverse experiences and beliefs come together to create a community of laughter, joy, and healing. A place where it is safe to explore and share who and what we are. Now is the time for you to gather with other loving people of similar interests in your quest for spiritual development and fellowship. Come, relax, and experience **From Ordinary To Extraordinary~The Alchemy of The Soul**. We are excited to offer you a week full of classes, lectures, workshops, meditations, healing experiences, and more.

Cover design by Dani Ehlenfeldt

### Sunday

10:00 am	-	12:00 pm	Registration, Gift Center
12:30 pm	-	1:00 pm	Lunch
1:15 pm	-	3:00 pm	Opening Program
3:15 pm	-	5:15 pm	Afternoon Workshops
5:30 pm	-	6:00 pm	Dinner
7:15 pm	-	8:15 pm	Evening Program
8:30 pm	-	10:00 pm	Special Event (see page 16)
8:30 pm	-	10:15 pm	Gift Center Open
8:30 pm	-	9:30 pm	Message Circles
9:00 pm	-	11:00 pm	Zodiac Zone, Sharing, Refreshments

### Monday - Thursday

8:15 am	-	8:45 am	Breakfast
9:00 am	-	10:00 am	Morning Program
10:15 am	-	12:15 pm	Morning Workshops
12:30 pm	-	1:00 pm	Lunch
1:15 pm	-	3:15 pm	Free Time: Consultations, Gift Center, Special Events (see page 16)
3:30 pm	-	5:30 pm	Afternoon Workshops
5:45 pm	-	6:15 pm	Dinner
6:30 pm	-	8:15 pm	Evening Program
8:30 pm	-	9:30 pm	Special Events (see page 16)
8:30 pm	-	10:15 pm	Gift Center Open <b>(Monday and Tuesday)</b>
9:00 pm	-	11:00 pm	Zodiac Zone, Sharing, Refreshments

### Friday

7:00 am	-	8:00 am	Room Checkout (College Requirement)
8:15 am	-	8:45 am	Breakfast
9:00 am	-	11:00 am	Morning Workshops
11:15 am	-	12:00 pm	Closing Program, Raffle Grand Prize
12:00 pm	-	12:30 pm	Lunch and Farewells

## LECTURES

Mary Lemons

***Using our  
Ordinary Senses  
Extraordinarily***

Sunday, July 19  
7:30 p.m.



Dr. Jon Mundy

***What Is Mysticism?***

Wednesday, July 22  
9:00 a.m.



Rev. John Davis

***Be the Light of the  
World***

Monday, July 20  
9:00 a.m.



**HEALING  
SERVICE**

Wednesday, July 22  
7:15 p.m.

Jim Puskala

***The Time is Now  
"2020" ...***

Monday, July 20  
7:30 p.m.



Rev. Normandi

Ellis  
***Rebel in the Soul:  
A Conversation  
with the Egyptian  
Ba***

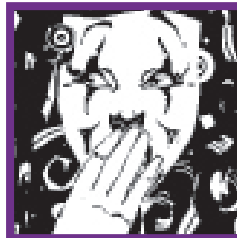
Thursday, July 23  
9:00 a.m.



Katheryn  
Rutherford

***Beyond the 7  
Chakras: Reaching  
Beyond the  
Ordinary***

Tuesday, July 21  
9:00 a.m.



**VARIETY SHOW**

Thursday, July 23  
7:15 p.m.

Jewel Shelden

***Blessings for  
Better Health***

Tuesday, July 21  
7:30 p.m.



**CLOSING  
CEREMONY**

Friday, July 24  
11:15 a.m.



Week Long Workshops are designed for those full-time retreatants who would like to interact with one workshop leader for the entire week. Depending on how the class is designed, it may contain multiple topics or a single topic that is related to the workshop title. The workshop leader remains the same with each session. Please see the Single Sessions starting on Page 8 if you are interested in a sampling of workshops or only attending for a day or two. **You can sign up for one A.M. Week Long Workshop OR five A.M. Single Sessions.**



## **#1 Living A Course in Miracles**

**Dr. Jon Mundy**

**Campbell Hall, NY**

A complete analysis of A Course in Miracle, including how it came to be and what it says; the metaphysics of ACIM; examination of all the major terms and topic in the Course, including the role of Jesus, the Holy Spirit and God in the Course, along with how the principles are to applied in daily life, how it differences from traditional Christianity, what it

means when it says the Course of part of “the Universal Course.”

*Dr. Jon Mundy is an author, lecturer, the publisher of “Miracles” magazine and Director of the Miracles Studies Program for All Faiths Seminary in New York City. He taught courses in Philosophy and Religion from 1967 to 2008 at the New School University and the State University of New York specializing in “The History of Mysticism.” The author of 10 books, his newest book is “A Course in Mysticism and Miracles”. His previous book, “Living A Course in Miracles” has become a perennial best-seller and now exists in 8 languages. He has also produced 137 YouTube presentations on “A Course in Miracles”. Jon met Dr. Helen Schucman (Shuck-man) the scribe of “A Course in Miracles” in 1973. Helen introduced Jon to the Course and served as his counselor till she became ill in 1980.*



## **#2 Hieroglyphic Magic**

**Rev. Normandi Ellis**

**Chesterfield, IN**

As we work through the hieroglyphs, we find ourselves inside a world of living prayer to the deities, oracular language and the key to entering into altered spaces and states of consciousness on the astral dimension. These workshops offer practical meditations and application of the words of power modeled in the Egyptian Book of the Dead.

**Rev. Normandi Ellis** ([www.normandiellis.com](http://www.normandiellis.com)) is an ordained Spiritualist minister, clairvoyant, astrologer, and priestess of the Goddess Isis. Author of 14 books on ancient Egyptian mysteries, including many Egyptian books on metaphysics, magic, myth, and travel, her many works promote empathy, understanding, and planetary peace. She teaches Spiritualism and metaphysics in the Chesterfield Spiritualist College at Camp Chesterfield, Indiana.

Week Long Workshops are designed for those full-time retreatants who would like to interact with one workshop leader for the entire week. Depending on how the class is designed, it may contain multiple topics or a single topic that is related to the workshop title. The workshop leader remains the same with each session. Please see the Single Sessions starting on Page 10 if you are interested in a sampling of workshops or only attending for a day or two. **You can sign up for one P.M. Week Long Workshop OR five P.M. Single Sessions.**



### #3 Applications for Elements in All Energetic Practices

Frank Graham

Plainwell, MI

Learn to build energy recipes from scratch. The first four days will be an intensive journey into each element. Metals, plants, animal totems, and crystals and stones are thoroughly examined for their qualities. How to use each element. How to choose individual specimens from them. (example: choosing crystals and stones for earth, then learning which particular stones to use ) We end with building recipes for ritual, ceremony, tool creation and all forms of energy crafting from healing to prayer.

**Frank Graham** is a certified as a master crystallogist through Melodies Crystal Healing. He has lectured for graduate students at MSU, CMU, and at the annual Convocation conference. He was an adviser for student groups at MSU. He has been a metaphysical minister for 14 years. He has done extensive research on angelology, the elements, humours of the body, spiritual theory, spiritual philosophy, spiritual geometry, spiritual physics, practical spiritual energy application, protection, demonology, ancient mythology, and the Hermetica.



### #4 Interweaving Life's Extraordinary Oneness through Death, Reincarnation, and Energy Healing

Mary Lemons

Albemarle, NC

Together we will experience death as a sacred threshold between two realities. We will connect with deceased loved ones and consider what is a "good death". By considering our own legacy, we will embrace death as an opportunity for our souls' growth. We will work with reincarnation as a healing modality for ourselves and future generations. Doing energy work on each other we will experience the creative healing life force in our physical and emotional bodies. Our week will end with the Sacred Heart Blessing that envelopes us in our own unconditional love and self-awareness. In Sacred Heart Blessing each of us will be both facilitator and recipient of this remarkable and tenderly unique blessing.

**Mary Lemons** is founder of Inner Awakenings, a holistic healing practice for all species. Her healing work is centered at her family quarter horse farm in North Carolina. For over thirty years Mary has taught workshops and lectured at spiritual conferences. She is a spiritual intuitive and animal communicator, a Healing Touch practitioner, SoulCollage® Facilitator, Thymo-Kinesiologist, Reiki Master, and End of Life Doula. Mary's belief in the sacredness of all life, of all species, of all forms of creation is the foundation of her spiritual work.

Single Sessions are designed for those full-time retreatants who would like to sample a greater variety of topics, or for those who can only attend the retreat for a day or two. The workshop leader and/or topics change with each session. **You can sign up for one A.M. Week Long Workshop OR five A.M. Single Sessions.**

**MONDAY MORNING (choose one)**



**#5 Jewelry Wire Wrapping**

Heather Barrett

Indianapolis, IN

**SUPPLY FEE \$10**

So you have some really cool stones, crystals and beads, and you want to know how to make something beautiful with them? You will learn how to make a beautiful pendant to take home with you. Stones, beads and wire will be provided.

**Heather Barrett** is the owner of a metaphysical store, *All My Relations*, in Indianapolis, IN. She is an Ordained Minister, Reiki

*Master, Life Coach and trained in the use of Etheric Weavers. She has been involved in the metaphysical realm for over 30 years as a practitioner and teacher. Through the private sessions, workshops and classes she teaches; she helps people to understand who they are, what their potential is and grow spiritually.*



**#6 Finding Solid Ground in Times of Shifting Sands**

Rev. Diane Stark

Muskegon, MI

This is an opportunity to experience the feeling of being spontaneous and unguarded. That is the groundwork needed for community to thrive in love. The solid ground in shifting sands is being ourselves, in the face of any and all circumstances.

**Diane Stark** has been an educator and a spiritual leader throughout a lifetime of service. She graduated from the U of Md, and was ordained by Unity Worldwide Ministries. She has conducted spiritual gatherings and experiential workshops for community and religious groups in her home town of Washington, D.C., as well as Kansas City, MO, and now Muskegon, MI.



## TUESDAY MORNING (choose one)



### #7 Mysteries & Secrets of Palmistry

Jewel Shelden

Hastings, MI

Palmar patterns are unique to each individual. Certain signs reveal inherited health tendencies, skills and talents and personality traits. Your hands can also provide clues about your past, present path and possible future. Expand your awareness of self!

**Jewel Shelden**, author and lecturer, has made a life-long study of palmistry and dermatoglyphics, reading 1000's of hands at corporate and university events, and for private groups. She works as a professional psychic consultant and spiritual counselor on a daily basis. She is a certified hypnotherapist, ordained minister and Reiki master. She has been a guest psychic on radio shows in Ann Arbor, and presented esoteric classes for Ann Arbor Seminars, Great Lakes Retreat and Kellogg Community College.



### #8 Using Improv Techniques when doing Intuitive Work

Letha Cupp

Floyds Knobs, IN

Improv means to do something without preparation. It requires quick thinking, collaboration, getting out of your own way, and being in the moment. We will explore improv techniques to help in intuitive work and daily living.

**Letha Cupp**, also known as Gypsy Sol, is an empath, intuitive, and reiki master. Since 1986, Letha has performed on stage with college theatre, as a singer in a rock and roll band, and as a dancer in a middle eastern performance troupe. In 1998, she began a public relations career that included multiple public speaking opportunities, and later, a few media spokesperson opportunities. In 2019, she stepped out of her comfort zone and attended a 6 week Comedy Improv Workshop to strengthen her ability to think and speak in the moment. From that experience, she made a connection of working more from the gut instinct rather than the ego when giving intuitive readings.

## WEDNESDAY MORNING (choose one)



### #9 A New Cycle is Upon Us: Calling Us to Rise as Love

David Schroeder

Grand Rapids, MI

An informative presentation, offering scientific and spiritual evidence on current earth and human changes. Based on cycles of the universe, David explains how this cycle and its energies are intended to raise the consciousness of humanity and help us Rise as Love.

**David Schroeder, LMSW, CPC** ([www.transitionpathways.com](http://www.transitionpathways.com)) is a clinical and spiritual social worker, life coach, and author. For 17 years in his practice, Transition Pathways, David has assisted individuals, couples, and groups in discovering healthy pathways to love, higher awareness, and greater potential. He conducts a variety of workshops on topics such as: spirituality and self-esteem, Just Be Love: The Soul's Journey (based on his book Just Be Love), Conscious Relationship, and more.



## WEDNESDAY MORNING *Continued* (choose one)



### #10 Going With The Flow: Messages from the Universe using Alcohol Ink

Letha Cupp

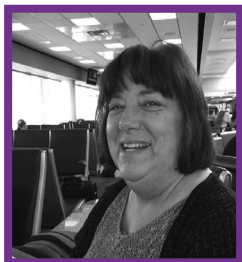
Floyds Knobs, IN

**SUPPLY FEE \$10**

Using alcohol ink as a medium, the workshop will explore the essence and the art of going with the flow. The ink will display a unique message from the Universe for the participant.

**Letha Cupp**, also known as Gypsy Sol, is an empath, intuitive, reiki master and graphic designer. She has been creating abstract art with alcohol ink for over a year. Many of her pieces displayed images as the ink dried on the paper. She found a unique connection between the meditative stance of working with a fluid medium and the way the Universe communicates through this process. She took art classes in college, but is mostly a crafter and creator. She uses her alcohol ink creations in graphic design projects for commercial usage, such as brochures, logos and backdrop images.

## THURSDAY MORNING (choose one)



### #11 Karmic Healing: A Guide to a Better You

Katheryn Rutherford

Cedar Rapids, IA

This session is designed for anyone wanting to start to heal past karmic issues. Each of us carries karmic debris from our actions either here now or during a past life. Discussion will center on what is Karma, how karma is brought with us into another life time, the necessity of beginning to heal our karmic energy, how the karmic debris from our past can be passed

down through the generations.

**Katheryn Rutherford** ([crystalclearvision8.wixsite.com](http://crystalclearvision8.wixsite.com)) is a Usui Reiki Master/Teacher, Karmic Reiki Master/Teacher, and the resident clairvoyant/medium at ReAlive Metaphysical & Repurposing Marion, Iowa. She holds a Bachelor degree in Metaphysical Humanistic Science and is the founder of CrystalClearVision and Marion Reiki Center. Katheryn has been teaching Chakra Healing, Reiki, meditation, and Spirit Guide Communication for over 10 years.



### #12 Healing our Nature Connections

Minnie Kansman

Loveland, CO

Using a technique from Nature and Forest Therapy call Aloha Ropes, we will make reparations with the "More than Human World" in places where there are tears, kinks, or disconnect. Repairing and rekindling relationships take time and insight into where the relationship became dis-eased in the first place. We will be out- of -doors weather permitting.

**Minnie Kansman** and her business Eco~Balance Humanity in Harmony with Nature have been assisting others with Feng Shui, Sacred Space Clearing, and Nature Spirit Connection since 1994. She is a certified Master Feng Shui Consultant and Educator and a certified Nature and Forest Therapy Guide. Minnie is the author of *Spirit Gardens: Rekindling our Nature Connection*, and *Missing Nana: Lessons from the Nature Spirits*. She is also a co-host of the radio show *Nature Adventures* and owner of *Nature Travel Adventures*, taking travelers on Sacred Earth adventures around the world.

FRIDAY MORNING (choose one)



**#13 Beyond the 7 Chakras – Introduction to the Earth Star and Mind-Over-Matter Chakras**

Katheryn Rutherford

Cedar Rapids, IA

Discussion will be around the 3rd and 4th of the higher spiritual chakras. The 10th Earth Star and 11th Mind-Over-Matter chakras are the key to our earth connection and our universal connection. Learn how tools like meditations, essential oils, and stones can aid in the improvement of energy

flow and how improvement can aid in achieving your spiritual purpose.

**Katheryn Rutherford** ([crystalclearvision8.wixsite.com](http://crystalclearvision8.wixsite.com)) is a Usui Reiki Master/Teacher, Karmic Reiki Master/Teacher, and the resident clairvoyant/medium at ReAlive Metaphysical & Repurposing Marion, Iowa. She holds a Bachelor degree in Metaphysical Humanistic Science and is the founder of CrystalClearVision and Marion Reiki Center. Katheryn has been teaching classes in Chakra Healing, Reiki, meditation, and Spirit Guide Communication for over 10 years in the Iowa area.



**#14 The Meditative Creative**

Rev. Jama Young

Plainfield, IN

Learn how to open channels of communication with the divine to better focus your creative efforts. Join spirit artist, Jama Young, as she shares her step-by-step guide for entering a spiritually suggestive state to prepare for creative communion. She'll walk you through her own ritual process for contacting her angels, guides, and other energies. You'll also learn about

creative mindfulness and why mindful people are the happiest people in the world. Come explore the meditative creative.

**Jama Young** ([www.prayerurns.com](http://www.prayerurns.com)) is a spirit artist and the founder of Art by Jama. She is the creator of Prayer Urns, vessels of hope and faith that are used in spiritual rituals. Her artwork appears in private collections throughout the country and in the permanent collection at the Richmond Art Museum in Indiana. Her calling is to promote spirituality and introduce people to prayer, manifestation, and creative meditation. She is a clairvoyant and an Usui Reiki master healer. She holds a BFA in Fine Arts from Indiana University and has been an ordained minister since 2007.

Single Sessions are designed for those full-time retreatants who would like to sample a greater variety of topics, or for those who can only attend the retreat for a day or two. The workshop leader and/or topics change with each session. **You can sign up for one P.M. Week Long Workshop OR five P.M. Single Sessions.**

SUNDAY AFTERNOON (choose one)



**#15 Let's Explore the Wonderful World of Stones & Crystals**

Heather Barrett

Indianapolis, IN

You will learn how to choose, clean, charge and use your stones. You will learn about colors, shapes, pendulums, wands and more! This is a hands-on class, so come and have some fun!

**Heather Barrett** is the owner of a metaphysical store, *All My Relations*, in Indianapolis, IN. She is an Ordained Minister, Reiki Master, Life Coach and trained in the use of *Etheric Weavers*. She has been involved in the metaphysical realm for over 30 years as a practitioner and teacher. Through the private sessions, workshops and classes she teaches; she helps people to understand who they are, what their potential is and grow spiritually.



**#16 Spirit of the Drum Part One - Rhythms, Patterns, and Sounds**

Minnie Kansman

Loveland, CO

Come learn how to “play” with your drum! In this class I will teach different rhythms from around the world, techniques for making different sounds with your drum, and even how to notate those rhythm patterns so you can remember them after you get home. This will be a hands-on class, and I have

several drums to share with those who might not have a drum yet but a desire to learn.

**Minnie Kansman** and her business *Eco~Balance Humanity in Harmony with Nature* have been assisting others with Feng Shui, Sacred Space Clearing, and Nature Spirit Connection since 1994. She is a certified Master Feng Shui Consultant and Educator and a certified Nature and Forest Therapy Guide. Minnie is the author of *Spirit Gardens: Rekindling our Nature Connection*, and *Missing Nana: Lessons from the Nature Spirits*. She is also a co-host of the radio show *Nature Adventures* and owner of *Nature Travel Adventures*, taking travelers on Sacred Earth adventures around the world.

MONDAY AFTERNOON (choose one)



**#17 Basic & Advanced Numerology**

Rev. John Davis

Grand Rapids, MI

Learn “how to” prepare your personal Personality Profile and discover the exciting interpretation of double digit numerology, Karmic challenges, past-life achievements and personal relationships. John will share these concepts in an “easy to understand” process. “Science of Numbers” is fun!

**John Davis** is Director of the Coptic Fellowship International, an action-oriented modern philosophy based upon laws of balanced living originally introduced by the Egyptian Mystery Schools. He is also Director of the Spiritual Unity of Nations, dedicated to “The World as One Family,” and Founder of the World Service Order program, training metaphysical leaders since 1985. John is an Egyptologist who has taken 32 tours to Egypt, and an internationally-known personal and planetary numerologist who has given over 13,000 numerology readings.



**#18 Spirit of the Drum Part Two- Drumming for Self Confidence, Healing and Joy!**

Minnie Kansman

Loveland, CO

Our body naturally responds to the sound of vibration as it resonates with our heartbeat and the heartbeat of Mother Earth. In this class we will explore the healing aspects of Shadow Drumming and the release it offers through these vibrations. Using the drum as a tool for our inner work, we

can create transformation from the inside out. This will be a hands-on class, and I have several drums to share with those who might not have a drum yet but a desire to learn.

**Minnie Kansman** and her business Eco~Balance Humanity in Harmony with Nature have been assisting others with Feng Shui, Sacred Space Clearing, and Nature Spirit Connection since 1994. She is a certified Master Feng Shui Consultant and Educator and a certified Nature and Forest Therapy Guide. Minnie is the author of *Spirit Gardens: Rekindling our Nature Connection*, and *Missing Nana: Lessons from the Nature Spirits*. She is also a co-host of the radio show *Nature Adventures* and owner of *Nature Travel Adventures*, taking travelers on Sacred Earth adventures around the world.

TUESDAY AFTERNOON (choose one)



**#19 Just Be Love: The soul's Journey**

David Schroeder

Grand Rapids, MI

Journey with David to remember the love and goodness you are, as he inspires you to Just Be Love. This Interactive presentation will offer greater understanding of our soul's journey with love and living from our heart.

**David Schroeder, LMSW, CPC** ([www.transitionpathways.com](http://www.transitionpathways.com)) is a clinical and spiritual social worker, life coach, and author. For 17 years in his practice, Transition Pathways, David has assisted individuals, couples, and groups in discovering healthy pathways to love, higher awareness, and greater potential. He conducts a variety of workshops on topics such as: spirituality and self-esteem, Just Be Love: The Soul's Journey (based on his book Just Be Love), Conscious Relationship, and more.



**#20 Practical Every Day Uses of Reiki and Other Healing Modalities**

Katheryn Rutherford

Cedar Rapids, IA

Many times we get so caught up in the awe of the healing modality we use that we forget the ordinary ways that we can practice on a daily basis. When we were first introduced to our healing modality we were excited and ready to use on anything – this course is designed to bring the excitement

back and offer ideas that you may have forgotten or never thought of. Some of the uses we will discuss include but are not limited to gardening, self-care, clearing space, and food preparation.

**Katheryn Rutherford** ([crystalclearvision8.wixsite.com](http://crystalclearvision8.wixsite.com)) is a Usui Reiki Master/Teacher, Karmic Reiki Master/Teacher, and the resident clairvoyant/medium at ReAlive Metaphysical & Repurposing Marion, Iowa. She holds a Bachelor degree in Metaphysical Humanistic Science and is the founder of CrystalClearVision and Marion Reiki Center. Katheryn has been teaching classes in Chakra Healing, Reiki, meditation, and Spirit Guide Communication for over 10 years in the Iowa area.

WEDNESDAY AFTERNOON (choose one)



**#21 Clearing Personal Space**

Jewel Shelden

Hastings, MI

Want better health? Want to lose weight? Want to be happy instead of melancholy? ~ Clear your energy field! You decide what you will and won't allow in your energetic aura. Revealing discussion on negativity of others, irritants in your environment and overlays from spirit.

**Jewel Shelden**, author and lecturer, has made a life-long study of palmistry and dermatoglyphics, reading 1000's of hands at corporate and university events, and for private groups. She works as a professional psychic consultant and spiritual counselor on a daily basis. She is a certified hypnotherapist, ordained minister and Reiki master. She has been a guest psychic on radio shows in Ann Arbor, and presented esoteric classes for Ann Arbor Seminars, Great Lakes Retreat and Kellogg Community College.



WEDNESDAY AFTERNOON Continued (choose one)



**#22 Meet Your Totem Animal**

Jeanna Billings

Petersburg, IN

**SUPPLY FEE \$5**

Join Jeanna Billings in a discussion of concepts and techniques for opening channels of communication with your Animal Ally and learning how they benefit your daily life. Following a Shamanic journey to meet your personal animal helper, we will be making Power Animal altar cards for home use.

**Jeanna Billings** has a life long affinity with the natural world.

She intuitively knew that animal guides surround us and shamanic training taught her that each of us are born with Power Animals, sent to give us guidance, support and protection. Jeanna's gifts as a Power Animal Intuitive will introduce you to the mystical world of your personal Animal Guardian. Jeanna is an ordained minister, animal communicator, Reiki Master/Energyworker, canine massage provider and Certified Crystal Healer.

THURSDAY AFTERNOON



**#23 Past Lives**

Jim Puskala

Indianapolis, IN

How many times have you been in a body on the planet? Each time we come, we learn or teach lessons for ourselves or someone else. We will look at least one of those life items to see how it is affecting us in this lifetime.

**Rev. Jim Puskala** is a certified Reiki Master and an ordained Spiritualist Minister. He uses his intuitive awakening to help others

find their path. In 1993 he brought his spiritual awareness to a higher level through attending classes in Spiritual Frontiers Fellowship International of St Joseph, MI and has attended a wide variety of classes and workshops since that time. He also teaches and practices Sound Therapy with Soma Energetic Tuning Forks, Emotional Polarity, Touch for Health, Ama Deus, Whole Life Integration, and Reiki. He currently lives in Indianapolis, and teaches and practices at All My Relations.



**#24 Honor Your Animal Ally**

Jeanna Billings

Petersburg, IN

**SUPPLY FEE \$5**

"I've met my Totem Animal, now what do I do?" We will learn how to Honor Your Animal Ally with the use of photos, hand-crafted jewelry and more! Following this class, you will be able to easily integrate your Totem Animal into your daily life. We will be making an item in honor of your Animal Ally for you to

take home.

**Jeanna Billings** has a life long affinity with the natural world. She intuitively knew that animal guides surround us and shamanic training taught her that each of us are born with Power Animals, sent to give us guidance, support and protection. Jeanna's gifts as a Power Animal Intuitive will introduce you to the mystical world of your personal Animal Guardian. Jeanna is an ordained minister, animal communicator, Reiki Master/Energyworker, canine massage provider and Certified Crystal Healer.

**ATTENDEES** due to the focus of The Great Lakes Retreat, the program is intended for mature, responsible individuals. Child care is not available.

**AUCTION** will be held starting on Sunday night and going thru Tuesday night, offering fun and unique items to bid on. If you would like to donate new or hand-crafted items, contact:

Ronda SanCartier

Phone: (269) 251-0879

Email: Auction@TheGreatLakesRetreat.org

**EARLY ARRIVALS** on Saturday may register **after 2:00 P.M.** This will include room, dinner, and Sunday breakfast for an added fee of \$120 per person. **Reservations for Saturday night lodging must be made by June 18, 2019.**

### EMERGENCY PHONE NUMBERS

Campus Security are (269) 749-7911 or (269) 749-7173

Conference Office (269) 749-7611 or (269) 749-7197

**ENLIGHTENMENT EMPORIUM (THE GIFT CENTER)** will have many new and original creations available for purchase, and provide metaphysical and spiritual books and literature. Limited space is available. Any full-time retreatant wishing to display and sell items or any full-time retreatant who is a book vendor with new books, please contact:

Joelene VonKoenig

Phone: (269) 277-9590

Email: GiftCenter@TheGreatLakesRetreat.org

**GUARDIAN ANGEL** program provides an opportunity to share in the loving and giving spirit of the Retreat. Sending loving thoughts, prayers, giving hugs, leaving notes, secretly leaving small gifts at a room door or on the Angel Message Table, keeping your identity a secret (or not) are all options when you are someone's Angel. If you wish to participate in this activity, fill out the Angel form included in your folder at Retreat.

**HEALING CENTER** will be open daily during free time. A staff of healers will be available. **Massage tables needed!** Anyone who can bring a massage table for the Healing Center please contact:

Minnie Kansman

Phone: (616) 550-4088

Email: Healing@TheGreatLakesRetreat.org.

**HEALING SERVICE** will be held on Wednesday, July 22nd at 7:30 P.M. This evening service is focused on the healing of ourselves, each other, and the planet. Feel free to dress more formally, if you wish. All are welcome!



**KEY DEPOSIT** of \$10 per key is required. The deposit will be refunded when you return your key prior to your departure. The charge for a lost key is \$40.

**MEALS** will be served in the Kirk Student Center Cafeteria. The menu includes a salad bar, and vegetarian and non-vegetarian choices.

**MEDICAL POLICY** Retreatants in need of medical assistance shall seek out Olivet staff or The Great Lakes Retreat Committee members for information. Staff and Committee members reserve the right to call for professional medical help for any retreatant.

**MUSIC** preceding each lecture will be facilitated to contribute to the spirit of the Retreat.

**PETS** are not allowed on campus.

**PSYCHIC SAMPLER** provides a chance to explore different consultation modalities. Retreatants who are experienced consultants and wish to donate their time and talent as a reader, please send consultation background, name, address, and phone number to:

Laura Joy Veeneman

Phone: (616) 890-1050

Email: [PsychicSampler@TheGreatLakesRetreat.org](mailto:PsychicSampler@TheGreatLakesRetreat.org)

**QUIET TIME** needs to be observed in the hallways and dorms during afternoon free-time and evening hours after 10:00 p.m.

**RAFFLES** will be held twice a day, prior to the morning and evening program, with proceeds benefiting a Retreat fund, that helps to support the continuation of The Great Lakes Retreat. Tickets will be on sale outside Mott Auditorium. **You must be present to win.** To donate raffle items, contact:

Kristina Ehlenfeldt

Phone: (616) 260-9257

Email: [Raffle@TheGreatLakesRetreat.org](mailto:Raffle@TheGreatLakesRetreat.org)

**RECORDING** Workshops and Single Sessions will not be recorded. You may record your own Workshop or Single Session with the leader's permission. Lectures will be recorded and will be for sale via download, assuming no technical difficulties.

**REFUNDS** Any cancellation will be subject to a \$20 handling fee.

**REGISTRATION** We will accept registrations at any time, but to help with planning we want to receive registrations by July 1, 2019. Late registration after July 1, 2019 will be assessed a late fee of \$20. **REGISTRATION PRIOR TO THE RETREAT IS HIGHLY RECOMMENDED.**

**SWIMMING** will be available. Indoor pool hours will be announced during our Opening Ceremony.

**TRANSPORTATION**, for a fee, from the Capital City (Lansing) Airport to Olivet College will be provided on Saturday, July 18th; Sunday, July 19th; and from Olivet College to the Lansing Airport on Friday, July 24th.

**All information regarding your arrival and departure dates, times, airlines, and flight numbers need to be in the hands of Dani Ehlenfeldt by July 06, 2020.**

You will be contacted by the Registrar with the time and fees once the pick-up schedule has been determined. You will need to make your own arrangements if you do not contact Dani by July 06, 2020.

Dani Ehlenfeldt

Phone: (616)-334-8904

Email: [Support@TheGreatLakesRetreat.org](mailto:Support@TheGreatLakesRetreat.org).

**USED BOOKS** will be available for purchase in the Enlightenment Emporium. If you have any used books you would like to donate, please contact:

Joelene VonKoenig

Phone: (269) 277-9590

Email: [GiftCenter@TheGreatLakesRetreat.org](mailto:GiftCenter@TheGreatLakesRetreat.org)

**VARIETY SHOW** offers an opportunity for retreatants to share their special abilities on Thursday, July 23rd. So, please think about what talents you may want to share!

**VOLUNTEER ASSISTANCE** is welcomed from those who wish to contribute their time to the success of the Retreat. Check the appropriate box on your registration application.

**ZODIAC ZONE** is a place to meet with friends and share refreshments. It will be open evenings from: 9:00 P.M. to 11:00 P.M. Cookie donations welcomed, please contact:

Ann Kuehn

Phone: (810) 735-9818

Email: [ZodiacZone@TheGreatLakesRetreat.org](mailto:ZodiacZone@TheGreatLakesRetreat.org)

# *The Great Lakes Retreat*



## **“Where Heaven and Earth Meet”**

### **Sunday**

#### **Evening**

**Drumming Circle:** Bring drums, rattles, or other rhythm instruments (some will be provided) and participate in a facilitated drumming experience. Facilitated by Minnie Kansman.

**Three Message Circles:** Brief individual messages will be provided to each Circle participant. Sign up at the Counseling Table at Retreat.

**Fee \$10.00, Circle limit – 15 people**

### **Monday**

#### **Free Time**

**One Message Circle:** Brief individual messages will be provided to each Circle participant. Sign up at the Counseling Table at Retreat.

**Fee \$10.00, Circle limit – 15 people**

#### **Evening**

**Three Message Circles:** Sign up at the Counseling Table at Retreat. **Fee \$10.00, Circle limit – 15 people**

### **Tuesday**

#### **All Day**

**HAWAIIAN DAY!** Wear your favorite Hawaiian shirt!!

#### **Free Time**

**One Message Circle:** Sign up at the Counseling Table at Retreat.

**Fee \$10.00, Circle limit – 15 people**

#### **Evening**

**Special Events:** Silent Auction, Psychic Sampler, Author’s Book Signing available.

**Three Message Circles:** Sign up at the Counseling Table at Retreat. **Fee \$10.00, Circle limit – 15 people**

### **Wednesday**

#### **All Day**

**CHAKRA WEDNESDAY!** Wear your favorite Chakra colors!!

#### **Free Time**

**One Message Circle:** Sign up at the Counseling Table at Retreat.

**Fee \$10.00, Circle limit – 15 people**

### **Thursday**

#### **Free Time**

**One Message Circle:** Sign up at the Counseling Table at Retreat.

**Fee \$10.00, Circle limit – 15 people**

#### **Evening**

**Special Events:** Variety Show

**Three Message Circles:** Sign up at the Counseling Table at Retreat. **Fee \$10.00, Circle limit – 15 people**

**SPIRITUAL CONSULTATION** appointments will be available at the Retreat during Free Time. Information on consultants will be mailed/emailed to you along with your registration confirmation. Once you have received your registration confirmation, you can pre-register for appointments. It is advised to pre-register for appointments if there is a certain counselor with whom you would like to meet. This will give you first choice and also eliminate the long lines often experienced when signing up at the Retreat. Fees are \$50 for a 25-minute session and \$90 for a 55-minute session, except as otherwise noted. Please note that some consultations will require your birth date, accurate birth time, and birth place. Consultations are provided for entertainment purposes.

### SPIRITUAL COUNSELORS

Jeanna Billings  
Bev Boerman  
Letha Cupp  
Rev. John Davis  
Rev. Normandi Ellis  
Frank Graham

Nan Hunt  
Mary Lemons  
Jim Puskala  
Adrianna Rochelle  
Kathery Rutherford  
David Schroeder

Teresa Schroeder  
Jewel Sheldon  
Deb Swingholm  
Niki VanderWilp  
Rev. Jama Young

### THE GREAT LAKES RETREAT COMMITTEE / STAFF

Nina Castelluzzo: Counseling

Shari Davis-Schoech: Co-Chair/Brochure/Treasurer

Dani Ehlenfeldt: Brochure/Registrations/Signs/Cover Design/Mailing

Kristina Ehlenfeldt: Co-Chair/Brochure/Information Technology/Facebook

Nan Hunt: Photography/Area Assistant

Minnie Kansman: Healing Center/Healing Service

Ann Kuehn: Zodiac Zone

Margo San Cartier: Secretary/Area Assistant

Ronda San Cartier: Emcee/Assistant Counseling/Silent Auction/Donations

Laura Joy Veeneman: Variety Show/Silent Auction/Psychic Sampler

Joelene VonKoenig: Enlightenment Emporium

Website: [www.TheGreatLakesRetreat.org](http://www.TheGreatLakesRetreat.org)

## Location

**Olivet College** is located in South Central Michigan, 30 miles southwest of Lansing, the State Capitol, and 125 miles west of Detroit. It sits on a rolling hilltop shaded by huge maple and oak trees in the city of Olivet, a friendly community of 1,700 people. The College surrounds a park-like square for easy access on foot.

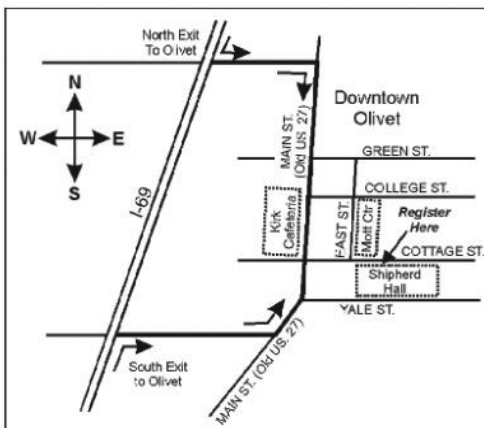
## Directions

**From Detroit:** Take I-94 west to Exit 110. Follow north about 10 miles to the College.

**From Lansing:** Take I-69 south to Exit 51 (Ainger Road), turn left. At next stop sign turn right to the College.

**From Kalamazoo:** Take I-94 to I-69 north. Follow to first Olivet exit (Exit 48), turn right at stop sign. Turn left at next stop sign, follow to College (about 1/2 mile).

**From Mt. Pleasant:** Take I-27 south to I-69. Exit I-69 at Ainger Road (Exit 51), turn left. At the next stop sign turn right to the College.



## For More Information

### CO-CHAIR

Shari Davis-Schoech  
(517) 518-0043

[cochair@TheGreatLakesRetreat.org](mailto:cochair@TheGreatLakesRetreat.org)

### CO-CHAIR

Kristina Ehlenfeldt  
(616) 260-9257

[cochair@TheGreatLakesRetreat.org](mailto:cochair@TheGreatLakesRetreat.org)

### CONSULTATIONS

Nina Castelluzzo  
43550 Algonquin  
Novi, MI 48375  
(248) 348-6892

[counseling@TheGreatLakesRetreat.org](mailto:counseling@TheGreatLakesRetreat.org)

### GIFT CENTER

Joelene VonKoenig  
4699 Ridge Road  
Stevensville, MI 49127  
(269) 277-9590

[giftcenter@TheGreatLakesRetreat.org](mailto:giftcenter@TheGreatLakesRetreat.org)

### REGISTRATION

Dani Ehlenfeldt  
PO Box 2054  
Grand Rapids, MI 49501-2054  
(616) 334-8904

[support@TheGreatLakesRetreat.org](mailto:support@TheGreatLakesRetreat.org)

# REGISTRATION APPLICATION

**Please fully complete a separate form for each registrant.**

Last Name (*Please Print*) \_\_\_\_\_ First Name (*For Name Tag*) \_\_\_\_\_ Initial \_\_\_\_\_

Street Address, Route, Box or Apt. # \_\_\_\_\_

City \_\_\_\_\_ State/Province \_\_\_\_\_ Zip \_\_\_\_\_ Country \_\_\_\_\_

Area Code & Telephone Number \_\_\_\_\_ E-mail (permission to publish Y or N ) \_\_\_\_\_

## **LODGING - PROGRAMMING** (U.S. Dollars)

Adult Registration includes: housing in a double occupancy room with shared bath, all lectures, workshops, participation in all activities, and meals.

<b><u>Rates</u></b>	<b><u>Regular</u></b>	<b><u>Amount</u></b>
Adult	\$625	\$ _____
Program Only (5 days, meals)	\$475	\$ _____
Daily Program (includes meals)	\$140	\$ _____
Lecture Only	\$ 20	\$ _____

***Additional \$20 costs for tickets purchased at the door***

**EXTRA COST OPTIONS** (Subject to Availability) ***Private rooms on second and third floor only. Private baths not available.***

	<b><u>ADD</u></b>	
Gillette Townhouse	\$110	\$ _____
Sat. Night Dinner, Lodging, Breakfast	\$120	\$ _____
Private Room ( <i>Limited Availability</i> )	\$100	\$ _____
Late Registration Fee after July 1, 2019	\$ 20	\$ _____

*All supply fees (if noted in class description) will be paid in class to presenter*

**TOTAL AMOUNT DUE** \$ \_\_\_\_\_

Credit Card # \_\_\_\_\_

Expires \_\_\_\_\_ CVV# \_\_\_\_\_

Your Signature: \_\_\_\_\_ Date: \_\_\_\_\_

DEPOSIT with Application (add \$100 for private room)...\$100

2nd PAYMENT due May 20 ..... \$100

3rd PAYMENT due June 24 ..... Balance Due

**AMOUNT ENCLOSED** \$ \_\_\_\_\_

Make check or money order payable to: **THE GREAT LAKES RETREAT**

## **Please Read and Sign**

I agree to abide by the Rules and Policies set forth by Olivet College and The Great Lakes Retreat Committee once I arrive at Olivet.

Signature \_\_\_\_\_ Date \_\_\_\_\_

Cut Along Dotted Line and Return This Form

# REGISTRATION APPLICATION

Register for one morning and one afternoon weeklong Workshop,

**OR** for daily Single Sessions.

## WORKSHOPS

	#	A.M. Workshop Leader	#	P.M. Workshop Leader
1st Choice	_____	_____	_____	_____
2nd Choice	_____	_____	_____	_____

## SINGLE SESSIONS

Single Sessions run concurrently with the workshops.

	#	A.M. Workshop Leader	#	P.M. Workshop Leader
Sunday	_____	_____	_____	_____
Monday	_____	_____	_____	_____
Tuesday	_____	_____	_____	_____
Wednesday	_____	_____	_____	_____
Thursday	_____	_____	_____	_____
Friday	_____	_____	_____	_____

## MISCELLANEOUS

Requested Roommate: \_\_\_\_\_

If no specific roommate is requested, you will be assigned a roommate of the same gender, similar age, and smoking preference you mark below.

Your Name: \_\_\_\_\_

Gender: \_\_\_\_\_ Female \_\_\_\_\_ Male

Age: \_\_\_\_\_ Under 18 \_\_\_\_\_ 18-25 \_\_\_\_\_ 26-35

\_\_\_\_\_ 36-50 \_\_\_\_\_ 51-65 \_\_\_\_\_ Over 65

Smoking: \_\_\_\_\_ Smoker \_\_\_\_\_ Non-Smoker

\_\_\_\_\_ **If possible**, for health reasons, I need a first floor room (*Limited Availability*)

**Private Rooms are not available on the first floor**

Health Reason: \_\_\_\_\_

### **Please indicate:**

\_\_\_\_\_ This is my first Great Lakes Retreat (*We're glad you're coming!*)

\_\_\_\_\_ I will volunteer to help where needed

\_\_\_\_\_ I will donate time in the Healing Center

\_\_\_\_\_ I would like to participate in the Variety Show

Meal Preference: \_\_\_\_\_ Vegetarian \_\_\_\_\_ Gluten Free \_\_\_\_\_ Other

Please send a copy of this brochure to the following person (optional):

Name: \_\_\_\_\_

Address: \_\_\_\_\_

City: \_\_\_\_\_ State: \_\_\_\_\_ Zip: \_\_\_\_\_

MAIL PAGES 19 & 20 TO: *Dani Ehlenfeldt*

*PO Box 2054, Grand Rapids, MI 49501-2054*

Cut Along Dotted Line and Return This Form





**The Great Lakes Retreat**  
**P.O. Box 2054**  
**Grand Rapids, MI**  
**49501-2054**



*Scan me* *Scan me*

[www.thegreatlakesretreat.org](http://www.thegreatlakesretreat.org)