



**0E-HD4C1TD  
0E-HD8C2TD  
0E-HD16C2TD**

**For Technical Support**  
(HD Cameras, HD DVR's, Analog DVR's, IP Cameras  
and NVR's):1-888-668-8808  
For Product info: [wboxtech.com](http://wboxtech.com)



# Contents

Contents .....	2
Warranty .....	3
Regulatory Information .....	9
Preventive and Cautionary Tips .....	10
Trademarks and Registered Trademarks .....	10
Appearance Description .....	11
Getting Started .....	12
Perform the New Secure Activation Procedure .....	12
Password Strength Levels .....	12
Options for Creating a Password for the Admin Account .....	13
Starting and Shutting Down the DVR .....	21
Live View .....	23
Live View Icons .....	23
Operations in Live View Mode .....	23
Adjusting Live View Settings .....	24
User Logout .....	25
Record .....	25
Instant Recording .....	25
All-Day Recording .....	25
Playback .....	26
Backup .....	27
Accessing via Web Browser .....	27
Specifications .....	29

The content in this manual is subject to change without notice. Updates will be added to future versions of this manual.

**DISCLAIMER STATEMENT**

“Underwriters Laboratories Inc. (“UL”) has not tested the performance or reliability of the security or signaling aspects of this product. UL has only tested for fire, shock or casualty hazards as outlined in UL’s Standard(s) for Safety, UL60950-1. UL Certification does not cover the performance or reliability of the security or signaling aspects of this product. UL MAKES NO REPRESENTATIONS, WARRANTIES OR CERTIFICATIONS WHATSOEVER REGARDING THE PERFORMANCE OR RELIABILITY OF ANY SECURITY OR SIGNALING RELATED FUNCTIONS OF THIS PRODUCT.

## Warranty

**1. Limited Warranty**

**a. General**

Subject to the terms and conditions of this Limited Warranty, from the date of sale through the period of time for product categories specified in Section 1(b), ADI warrants its W Box Technologies products to be free from defects in materials and workmanship under normal use and service, normal wear and tear excepted. Except as required by law, this Limited Warranty is only made to Buyer and may not be transferred to any third party.

ADI shall have no obligation under this Limited Warranty or otherwise if:

- i) The product is improperly installed, applied or maintained;
- ii) The product is installed outside of stated operating parameters, altered, or improperly serviced or repaired;
- iii) Damage is caused by outside natural occurrences, such as lightning, power surges, fire, floods, acts of nature, or the like.
- iv) Defects resulting from unauthorized modification, misuse, vandalism, or other causes unrelated to defective materials or workmanship, or failures related to batteries of any type used in connection with the products sold hereunder.

ADI only warrants those products branded as W Box Technologies products and sold by ADI. Any other products branded by third parties are warranted by the third party manufacturer for a period as defined by the third party manufacturer, and ADI assigns to Buyer those warranties and only those warranties extended by such third party manufacturers or vendors for non-ADI branded products. ADI does not itself warrant any non-ADI branded product and sells only on an as is basis in accordance with ADI’s terms and conditions of sale.

**b. Specific Warranties for product categories are as follows:**

Product Categories	Warranty Period
Soundbars	12 months
Walk Through Metal Detectors	12 months
Intrusion Wireless Communication Accessories	12 months
Analog Cameras	24 months
Hand Held Metal Detectors	24 months
Televisions	24 months
CCTV Power Supplies	24 months
In Ceiling Speakers	24 months
Amplifiers	24 months
Magnetic Locks	24 months
Request to Exit Devices	24 months

Surge Protection	24 months
UPS (uninterruptible power supplies)	24 months
Volume Controls	24 months
HDMI Distribution	24 months
6 Outlet Surge Protection	24 Months
Intrusion Audio Devices	30 months
Monitors	30 months
Power and Relays	30 months
Hold-up Buttons	30 months
Video Baluns	30 months
HD Analog Cameras	36 Months
HD Video Recorders	36 Months
Smoke Detectors	36 months
DVR's, NVR's	60 Months
IP Cameras	60 Months
Racks	60 months
TV Mounts	60 months
PIR's	60 months
Analog Cables	Limited Lifetime
B Connectors	Limited Lifetime
Bus Terminals	Limited Lifetime
Extension Cords	Limited Lifetime
HDMI Cables	Limited Lifetime
Jacks, Cords and Intrusion Communication Accessories	Limited Lifetime
Patch Cables	Limited Lifetime
Patch Panels	Limited Lifetime
Raceway Conduit	Limited Lifetime
Wire Ties	Limited Lifetime
Magnetic Contacts	Limited Lifetime

**2. EXCLUSION OF WARRANTIES, LIMITATION OF LIABILITY**

THERE ARE NO WARRANTIES OR CONDITIONS, EXPRESS OR IMPLIED, OF MERCHANTABILITY, OR FITNESS FOR A PARTICULAR PURPOSE OR OTHERWISE, WHICH EXTEND BEYOND THE DESCRIPTION ON THE FACE HEREOF. TO THE FULLEST EXTENT PERMITTED BY LAW, IN NO CASE SHALL ADI BE LIABLE TO ANYONE FOR ANY (I) CONSEQUENTIAL, INCIDENTAL, INDIRECT, SPECIAL, OR PUNITIVE DAMAGES ARISING OUT OF OR RELATING IN ANY WAY TO THE PRODUCT AND/OR FOR BREACH OF THIS OR ANY OTHER WARRANTY OR CONDITION, EXPRESS OR IMPLIED, OR UPON ANY OTHER BASIS OF LIABILITY WHATSOEVER, EVEN IF THE LOSS OR DAMAGE IS CAUSED BY ADI’S OWN NEGLIGENCE OR FAULT AND EVEN IF ADI HAS BEEN ADVISED OF THE POSSIBILITY OF SUCH LOSSES OR DAMAGES. Any product description (whether in writing or made orally by ADI or ADI’s agents), specifications, samples, models, bulletin, drawings, diagrams, engineering sheets, or similar materials used in connection with the Buyer’s order are for the sole purpose of identifying ADI’s products and shall not be construed as an express warranty or condition. Any suggestions by ADI or ADI’s agents regarding use, applications or suitability of the products shall not be construed as an express warranty or condition unless confirmed to be such in writing by ADI. ADI does not represent that the products it sells may not be compromised or circumvented; that the products will prevent any personal injury or property loss by

burglary, robbery, fire or otherwise, or that the products will in all cases provide adequate warning or protection. Buyer understands and will cause its customer to understand that a properly installed and maintained product is not insurance or guarantee that such will not cause or lead to personal injury or property loss. CONSEQUENTLY ADI SHALL HAVE NO LIABILITY FOR ANY PERSONAL INJURY, PROPERTY DAMAGE OR OTHER LOSS BASED ON ANY CLAIM AT ALL INCLUDING A CLAIM THAT THE PRODUCT FAILED TO GIVE WARNING. However, if ADI is held liable whether directly or indirectly for any loss or damage with respect to the products it sells, regardless of cause or origin, its maximum liability shall not in any case exceed the purchase price of the product, which shall be fixed as liquidated damages and not as a penalty and shall be the complete and exclusive remedy against ADI.

### 3. Limitation on Liability to Buyer's Customers.

Buyer agrees to limit liability to its customers to the fullest extent permitted by law. Buyer acknowledges that ADI shall only be deemed to give consumers of its products such statutory warranties as may be required by law and at no time shall Buyer represent to its customers and/or users of ADI products that ADI provides any additional warranties. By accepting the products, to the fullest extent permitted by law, Buyer assumes all liability for, and agrees to indemnify and hold ADI harmless against and defend ADI from, any and all suits, claims, demands, causes of action and judgments relating to damages, whether for personal injury or to personal property, suffered by any person, firm, corporation or business association, including but not limited to, Buyer's customers and/or users of the products because of any failure of the products to detect and/or warn of the danger for which the goods were designed or any other failure of the products whether or not such damages are caused or contributed to by the sold or joint concurring negligence or fault of ADI.

### 4. Returns

Subject to the terms and conditions listed below, during the applicable warranty period, ADI will replace Product or provide a credit at purchase at its sole option free of charge any defective products returned prepaid. Any obligations of ADI to replace Limited Lifetime warranty products pursuant to this warranty which result from defect are limited to the availability of replacement product. ADI reserves the right to replace any such products with the then currently available products, or provide a credit in its sole discretion. In the event Buyer has a problem with any ADI product, please call your local ADI branch for return instructions:

For US call 1-800-233-6261  
 For Canada call 877-234-7378  
 For Puerto Rico call 787-793-8830

Be sure to have the model number and the nature of the problem available. In the event of replacement, the return product will be credited to Buyer's account and a new invoice issued for the replacement item. ADI reserves the right to issue a credit only in lieu of replacement.

If any W Box Technologies product is found to be in good working order or such product's inability to function properly is a result of user damage or abuse, the product will be returned to Buyer in the same condition as received and Buyer shall be responsible for any return freight changes.

### 5. Governing Law

The laws of State of New York apply to this Limited Warranty.

### 6. Miscellaneous

Where any term of this Limited Warranty is prohibited by such laws, it shall be null and void, but the remainder of the Limited Warranty shall remain in full force and effect.

## 1. Garantie limitée

### a. Généralités

Sous réserve des modalités de la présente garantie limitée, à compter de la date de vente et pendant la période de garantie applicable aux catégories de produits précisée au paragraphe 1b), ADI garantit que ses produits W Box Technologies sont libres de tout vice de matériaux et de fabrication dans des conditions d'utilisation et d'entretien normales, sauf l'usure normale. Sauf si les lois l'exigent, la présente garantie limitée est offerte uniquement à l'acheteur et ne peut être transférée à un tiers.

ADI n'a aucune obligation aux termes de la présente garantie limitée ou autrement dans les circonstances suivantes :

- i. le produit est mal installé, appliqué ou entretenu;
- ii. le produit est installé de manière non conforme aux paramètres d'exploitation indiqués, modifié ou mal entretenu ou réparé;
- iii. le produit est endommagé par des phénomènes naturels extérieurs comme la foudre, une surcharge, un incendie, une inondation, une force majeure ou un phénomène similaire;
- iv. les défauts du produit résultent d'une modification non autorisée, d'une mauvaise utilisation, d'un acte de vandalisme ou d'autres causes non liés aux vices de matériaux ou de fabrication, ou à une défaillance des piles de quelque type que ce soit utilisées avec les produits vendus aux termes des présentes.

ADI ne garantit que les produits portant la marque W Box Technologies qu'elle vend. Les autres produits portant une marque de tiers sont garantis par le fabricant tiers pendant une période définie par ce dernier, et ADI cède à l'acheteur ces garanties et uniquement les garanties offertes par ces fabricants tiers ou vendeurs à l'égard de produits ne portant pas ses marques. ADI ne garantit pas de produits ne portant pas ses marques et vend ces produits tels quels, conformément à ses modalités de vente.

### b. Les garanties particulières applicables aux catégories de produits sont les suivantes :

Catégories de produits	Période de la garantie
Marcher à Travers les Détecteurs de Métaux	12 mois
Accessoires de communication d'intrusion sans fil	12 mois
Barres de son	12 mois
UPS (systèmes d'alimentation sans coupure)	24 mois
Téléviseurs	24 mois
Caméras analogiques	24 mois
Blocs d'alimentation CCTV	24 mois
Contrôles du volume	24 mois
Protection contre les surcharges	24 mois
Haut-parleurs pour le plafond	24 mois
Modules de requête de sortie	24 mois
Mise à jour des serrures magnétiques	24 mois
Distributeurs HDMI	24 mois
Serrures magnétiques	24 mois
Amplificateurs	24 mois

Parasurtenseur 6 prises	24 mois
Écrans	30 mois
Source de courant, Relais	30 mois
Bouton Hold-up	30 mois
Ballons vidéo	30 mois
Système d'alarme anti-intrusion	30 mois
Caméras analogiques HD	36 mois
analogiques DVR HD	36 mois
Détecteurs de fumée	36 mois
Bâtis	60 mois
Supports de télévision	60 mois
Caméras IP	60 mois
DVRs, NVR's	60 mois
Détecteurs de mouvement infrarouge	60 mois
Attaches pour câbles	À vie limitée
Les panneaux de brassage	À vie limitée
Câbles analogiques	À vie limitée
Câbles de raccordement	À vie limitée
Bornes de bus	À vie limitée
Connecteurs B	À vie limitée
Cordes d'extension	À vie limitée
Contact magnétiques	À vie limitée
Bloc modulaire, câbles et accessoires de communication	À vie limitée
Conduits cache-fil	À vie limitée
Câbles HDMI	À vie limitée

## 2. EXCLUSION DE GARANTIES ET LIMITATION DE RESPONSABILITÉ

IL N'EXISTE AUCUNE GARANTIE OU CONDITION, EXPRESSE OU IMPLICITE, DE QUALITÉ MARCHANDE, D'ADAPTATION À UNE FIN PARTICULIÈRE OU AUTRE QUI DÉPASSE LE CADRE DE LA DESCRIPTION FOURNIE AU RECTO DES PRÉSENTES. DANS LA PLEINE MESURE PERMISE PAR LA LOI, ADI NE SAURAIT EN AUCUN CAS ÊTRE TENUE RESPONSABLE ENVERS QUICONQUE DES DOMMAGES CONSÉCUTIFS, INDIRECTS, SPÉCIAUX OU PUNITIFS DÉCOULANT DU PRODUIT OU LIÉS À CELUI-CI DE QUELQUE FAÇON QUE CE SOIT ET/OU DU NON-RESPECT DE LA PRÉSENTE GARANTIE OU DE TOUTE AUTRE GARANTIE OU CONDITION, EXPRESSE OU IMPLICITE, OU DE TOUTE AUTRE RÉCLAMATION FONDÉE SUR LA RESPONSABILITÉ, MÊME SI LA PERTE OU LES DOMMAGES SONT CAUSÉS PAR LA NÉGLIGENCE OU LA FAUTE D'ADI ET MÊME SI CETTE DERNIÈRE A ÉTÉ AVISÉE DE LA POSSIBILITÉ QUE DE TELLES PERTES OU DE TELS DOMMAGES SURVIENNENT. Les descriptions de produits (fournies par écrit ou verbalement par ADI ou ses mandataires), caractéristiques techniques, échantillons, modèles, bulletins, dessins, diagrammes, esquisses techniques ou documents similaires utilisés par l'acheteur pour passer une commande visent uniquement à décrire les produits d'ADI et ne doivent pas être interprétés comme des garanties ou conditions expresses. Les suggestions faites par ADI ou ses mandataires au sujet de l'utilisation, de l'application ou du caractère approprié des produits ne doivent pas être interprétées comme des garanties ou conditions expresses, sauf si ADI confirme par écrit qu'il s'agit de garanties ou de conditions expresses. ADI ne garantit pas qu'il n'y aura aucune atteinte à l'intégrité des produits qu'elle vend ou

que les produits qu'elle vend ne seront pas contournés, qu'ils préviendront les blessures ou les pertes matérielles en cas de cambriolage, de vol, d'incendie ou autrement ou qu'ils constitueront dans tous les cas une protection ou un avertissement approprié. L'acheteur comprend qu'un produit dûment installé et entretenu permet uniquement de réduire le risque de cambriolage, de vol ou d'incendie sans avertissement, mais qu'il ne constitue pas une assurance ou une garantie qu'un tel événement ne se produira pas ou qu'il n'entraînera pas des blessures ou des pertes matérielles. PAR CONSÉQUENT, ADI NE SAURAIT ÊTRE TENUE RESPONSABLE DES BLESSURES, DES DOMMAGES MATÉRIELS OU D'AUTRES PERTES FAISANT L'OBJET D'UNE RÉCLAMATION, Y COMPRIS UNE RÉCLAMATION SELON LAQUELLE LE PRODUIT N'AURAIT PAS DONNÉ DE SIGNAL D'AVERTISSEMENT. Toutefois, si ADI est tenue responsable, directement ou indirectement, de pertes ou de dommages à l'égard des produits qu'elle vend, quelle qu'en soit la cause ou l'origine, sa responsabilité n'excédera en aucun cas le prix d'achat du produit, dont le remboursement sera exigé à titre de dommages-intérêts extrajudiciaires et non d'amende, et il s'agira du recours exclusif et intégral pouvant être exercé contre ADI.

### 3. Limitation de la responsabilité envers les clients de l'acheteur.

L'acheteur s'engage à limiter la responsabilité envers ses clients dans la pleine mesure permise par la loi. L'acheteur reconnaît qu'ADI ne sera réputée avoir fourni aux consommateurs de ses produits que les garanties qui sont exigées par la loi. L'acheteur ne doit en aucun cas déclarer à ses clients et/ou aux utilisateurs des produits d'ADI que cette dernière offre d'autres garanties. Par l'acceptation des produits, l'acheteur assume, dans la pleine mesure permise par la loi, la pleine responsabilité à l'égard de toutes les poursuites, réclamations, mises en demeure et causes d'action et à l'égard de tous les jugements se rapportant à des dommages-intérêts, que ce soit pour des préjudices personnels ou des dommages matériels, subis par une personne, une firme, une société ou une association commerciale, y compris les clients de l'acheteur et/ou les utilisateurs des produits, en raison de toute omission de la part des produits de déceler le danger pour la détection duquel ils sont conçus et/ou de donner l'alerte de ce danger ou un avertissement de toute autre défaillance des produits, que ces dommages aient été causés par la négligence dont ADI est l'auteur ou le coauteur, et il tiendra ADI à couvert à cet égard et prendra fait et cause pour lui.

### 4. Retours

Sous réserve des modalités énumérées ci-après, durant la période de garantie applicable, ADI remplacera le produit ou donnera une note de crédit à l'achat, à son gré et sans frais, à l'égard de tout produit défectueux qui lui est retourné. L'obligation qui incombe à ADI de remplacer le produit visé par une garantie à vie limitée aux termes de la garantie en question si celui-ci est défectueux se limite à la disponibilité d'un produit de remplacement. ADI se réserve le droit de remplacer un produit défectueux par le produit qui est disponible à ce moment-là, ou de donner une note de crédit, à son gré. Si l'acheteur a un problème avec un produit d'ADI, il doit appeler sa succursale ADI locale pour connaître la marche à suivre pour retourner le produit.

Aux États-Unis, composer le 1 800 233-6261

Au Canada, composer le 877 234-7378

À Porto Rico, composer le 787 793-8830

L'acheteur doit avoir en main le numéro du modèle et décrire la nature du problème. En cas de remplacement, le prix du produit retourné sera porté au crédit du compte de l'acheteur et une nouvelle facture sera établie pour le produit de remplacement. ADI se réserve le droit de donner une note de crédit plutôt que de remplacer le produit.

Si l'on établit que le produit W Box Technologies n'est pas défectueux ou que son mauvais fonctionnement résulte d'une utilisation abusive ou de dommages causés par l'utilisateur, le produit sera retourné à l'acheteur dans le même état que celui dans lequel il a été reçu et l'acheteur devra acquitter les frais de transport.

#### 5. Lois applicables

Les lois de l'État de New York s'appliquent à la présente garantie limitée.

#### 6. Modalités diverses

Si une modalité de la présente garantie limitée est interdite par ces lois, elle sera nulle, mais le reste de la présente garantie limitée demeurera pleinement en vigueur.

## Regulatory Information

### FCC Information


**FCC compliance:** This equipment has been tested and found to comply with the limits for a digital device, pursuant to part 15 of the FCC Rules. These limits are designed to provide reasonable protection against harmful interference when the equipment is operated in a commercial environment. This equipment generates, uses, and can radiate radio frequency energy and, if not installed and used in accordance with the instruction manual, may cause harmful interference to radio communications. Operation of this equipment in a residential area is likely to cause harmful interference in which case the users will be required to correct the interference at their own expense.


### FCC Conditions


This device complies with part 15 of the FCC Rules. Operation is subject to the following two conditions:

1. This device may not cause harmful interference.
2. This device must accept any interference received, including interference that may cause undesired operation

### EU Conformity Statement

 This product and - if applicable - the supplied accessories too are marked with "CE" and comply therefore with the applicable harmonized European standards listed under the Low Voltage Directive 2006/95/EC, the EMC Directive 2004/108/EC, the RoHS Directive 2011/65/EU.

 Municipal waste in the European Union. For proper recycling, return this product to your local supplier upon the purchase of equivalent 2012/19/EU (WEEE directive): Products marked with this symbol cannot be disposed of as unsorted municipal waste in the European Union. For proper recycling, return this product to your local supplier upon the purchase of equivalent new equipment, or dispose of it at designated collection points. For more information, see: [www.recyclethis.info](http://www.recyclethis.info).

 2006/66/EC (battery directive): This product contains a battery that cannot be disposed of as unsorted municipal waste in the European Union. See the product documentation for specific battery information. The battery is marked with this symbol, which may include lettering to indicate cadmium (Cd), lead (Pb), or mercury (Hg). For proper recycling, return the battery to your supplier or to a designated collection point. For more information, see: [www.recyclethis.info](http://www.recyclethis.info).

## Preventive and Cautionary Tips

Before connecting and operating your device, please be advised of the following tips:

- Ensure unit is installed in a well-ventilated, dust-free environment.
- Unit is designed for indoor use only.
- Keep all liquids away from the device.
- Ensure environmental conditions meet factory specifications.
- Ensure unit is properly secured to a rack or shelf. Major shocks or jolts to the unit as a result of dropping it may cause damage to the sensitive electronics within the unit.
- Use the device in conjunction with an UPS if possible.
- Power down the unit before connecting and disconnecting accessories and peripherals.
- A factory recommended HDD should be used for this device.
- Improper use or replacement of the battery may result in hazard of explosion. Replace with the same or equivalent type only. Dispose of used batteries according to the instructions provided by the battery manufacturer.

## Trademarks and Registered Trademarks

Windows and Windows mark are trademarks or registered trademarks of Microsoft Corporation in the United States and/or other countries.

HDMI, HDMI mark and High-Definition Multimedia Interface are trademarks or registered trademarks of HDMI Licensing LLC.

The products contained in this manual are authorized by HDMI Licensing LLC with the use right of the HDMI technology.

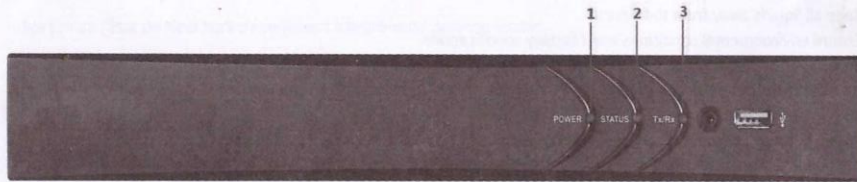


VGA is the trademark of IBM.

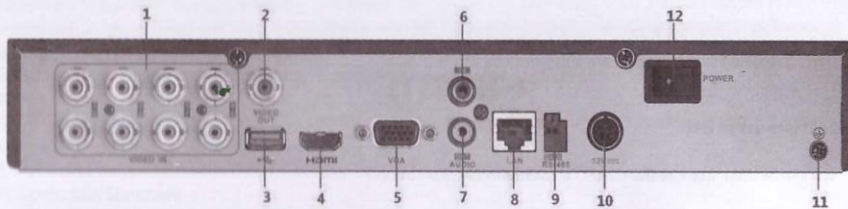
UPnP™ is a certification mark of the UPnP™ Implementers Corporation.

Other names of companies and product contained in this manual may be trademarks or registered trademarks of their respective owners.

## Appearance Description



No.	Description
1	Indicator turns red when DVR is powered up.
2	Indicator lights in red when data is being read from or written to HDD.
3	Indicator blinks blue when network connection is functioning properly.



No.	Description
1	VIDEO IN
2	VIDEO OUT
3	USB Interface
4	HDMI Interface
5	VGA Interface
6	AUDIO IN, RCA Connector
7	AUDIO OUT, RCA Connector
8	LAN Network Interface
9	RS-485 Serial Interface
10	12VDC Power Input
11	GND
12	Power Switch

## Getting Started

### 1. Perform the New Secure Activation Procedure

The user must activate the device by creating a password for the **admin** account, which can be done in one of three ways (see **Options for Creating a Password for the Admin Account**, page 13).

#### • Password Strength Levels

It is recommended that passwords be composed of three or more different kinds of characters: numbers, uppercase letters, lowercase letters, and special characters (such as \$, @, etc.). The firmware will identify the password strength and alert you to its level of protection through an on-screen, color-coded strength level indicator light.

STRENGTH LEVEL	DESCRIPTION
Level 0 (Risky) Device <b>will not</b> accept a Level 0 password (e.g., sildhleb)	Password length is fewer than eight characters, contains only one kind of character, is the same as the user name, and/or is the mirror writing of the user name. This type of password <b>will not</b> be accepted.
Level 1 (Weak) Device <b>will</b> accept a Level 1 password (e.g., 57kcseli)	Password contains two kinds of characters. The combination is number + lowercase letter or number + uppercase letter, and the password length is at least eight characters. This type of password <b>will</b> be accepted.
Level 2 (Medium) Device <b>will</b> accept a Level 2 password (e.g., KMggbRDb)	Password contains two kinds of characters. The combination is <b>neither</b> number + lowercase letter <b>nor</b> number + uppercase letter, and the password length is at least eight characters. This type of password <b>will</b> be accepted.
Level 3 (Strong) Device <b>will</b> accept a Level 3 password (e.g., xTC59?5m)	Password contains more than three kinds of characters, and the password length is at least eight characters. This type of password <b>will</b> be accepted.

**NOTE 1:** The on-line strength level indicator light colors can vary by activation process, model number, and device type. Typical: Risky = No Color, Weak = Pink, Medium = Yellow, Strong = Green.

**NOTE 2: PASSWORD CHARACTERS ALLOWED (ASCII Only):**

- **Lowercase ASCII Letters**  
a b c d e f g h i j k l m n o p q r s t u v w x y z
- **Uppercase ASCII Letters**  
A B C D E F G H I J K L M N O P Q R S T U V W X Y Z
- **Numerals**  
0 1 2 3 4 5 6 7 8 9
- **Special Characters**  
.-\_:/@,?!'()\$&"[]{}#%^\*+=\|<>

- Options for Creating a Password for the Admin Account

- Option 1: W Box Device Search Tool Activation on PC

1. Launch the latest version of the W Box Device Search Tool software (visit <http://www.wboxtech.com/video/html>).
  - > The software will display all W Box devices on the network.
  - > A new field named "Security" will display whether the camera/DVR is active or not (Figure 1).
2. If the camera/DVR is "inactive," highlight the camera/DVR and enter a new password into the "New Password" field on the bottom right of the screen (Figure 2). See **Password Strength Levels**, page 12, for guidelines.
  - > The password strength will be displayed, accompanied by an on-screen color indicator light<sup>1</sup>:
    - \* Level 0 – *Risky* (no indicator): Not acceptable
    - \* Level 1 – *Weak* (pink indicator): Acceptable
    - \* Level 2 – *Medium* (yellow indicator): Acceptable
    - \* Level 3 – *Strong* (green indicator): Acceptable
  - > Bar length indicates strength level.
  - > Activation will not be allowed unless the password is of acceptable strength (Figure 4) (Figure 5) (Figure 6). If the password is unacceptable strength ("Risky," Figure 2), a warning box will be displayed (Figure 3).
3. Retype the password into the "Confirm Password" field.
4. After the password has been entered and confirmed, press the **OK** button to display the pop-up confirmation window (Figure 7).
5. Press the "X" in the top right corner of the pop-up confirmation window to dismiss the window.

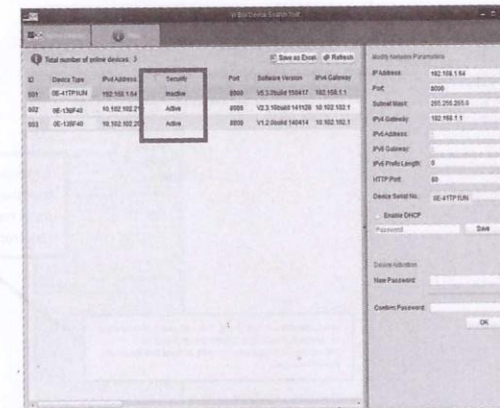


Figure 1 Security Field

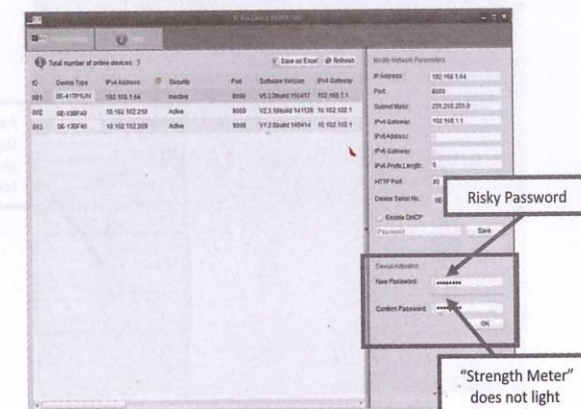


Figure 2 Password Field with "Risky" Unacceptable Password

<sup>1</sup> The on-screen strength level indicator light colors can vary by activation process, model number, and device type.  
August 2016



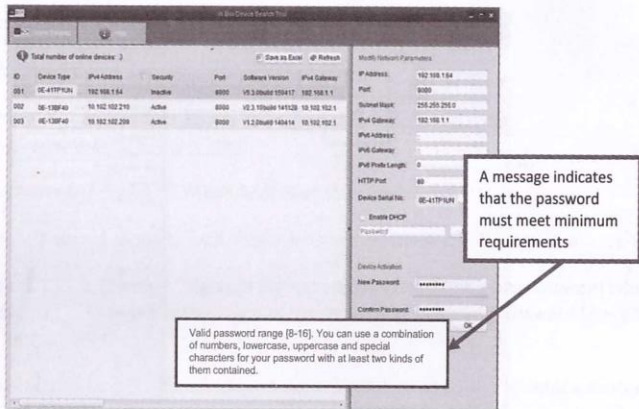


Figure 3 "Risky" Unacceptable Password Warning Message

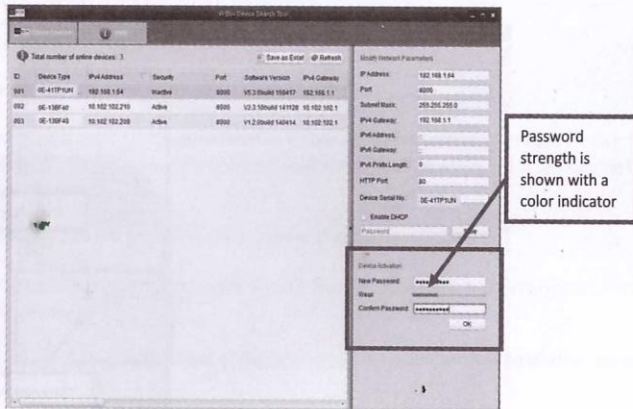


Figure 4 Password Field with Weak Strength Password

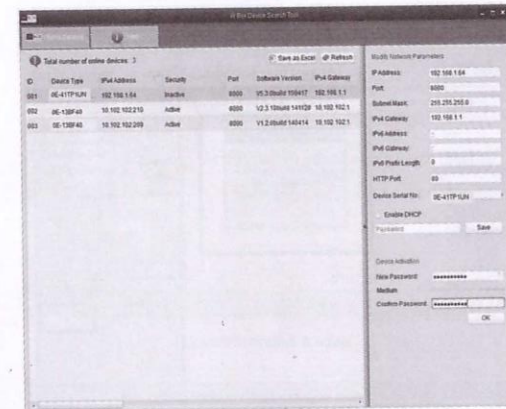


Figure 5 Password Field with Medium Strength Password

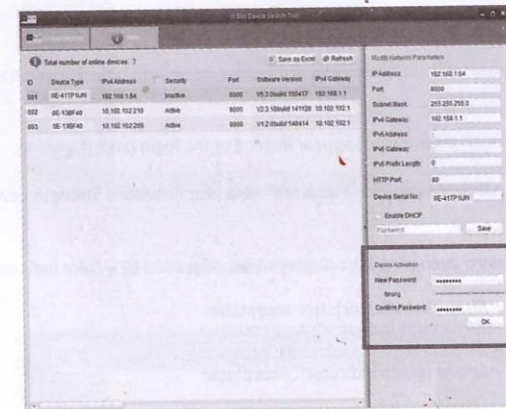


Figure 6 Password Field with Strong Strength Bar

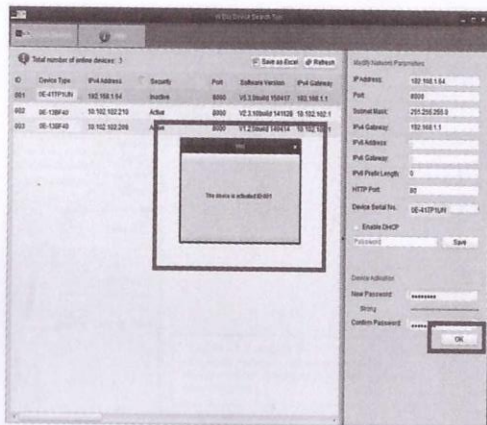


Figure 7 Confirmation Window

### Option 2: Web Interface Activation

- In a Web browser (i.e., Internet Explorer, Firefox, or Safari), type the camera/DVR IP address and press enter.
  - The Activation Window will appear instead of the login page (Figure 8).
- Enter a new password into the "Password" field (see **Password Strength Levels**, page 12, for guidelines).
  - The password strength will be displayed, accompanied by a color indicator<sup>2</sup>:
    - \* Level 0 – *Risky* (no indicator): Not acceptable
    - \* Level 1 – *Weak* (pink indicator): Acceptable
    - \* Level 2 – *Medium* (yellow indicator): Acceptable
    - \* Level 3 – *Strong* (green indicator): Acceptable
  - Bar length indicates strength level (Figure 11), (Figure 12), and (Figure 13).
  - Activation will be allowed if the password is of acceptable strength (Figure 11), (Figure 12), and (Figure 13). A white checkmark will appear in a green circle to the right of the password field.
  - If the password is unacceptable strength ("Risky," Figure 9), a white X will appear in a red circle to the right of the password field and a warning dialog box will be displayed (Figure 10) explaining the requirements for an acceptable password.
- Press the OK button.
  - After a successful activation the user will be logged in to the camera/DVR Live View page.

<sup>2</sup> The on-screen strength level indicator light colors can vary by activation process, model number, and device type.  
August 2016

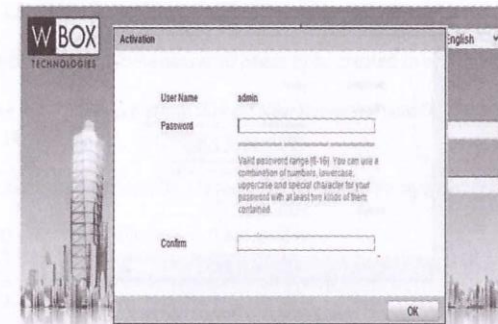


Figure 8 Activation Window

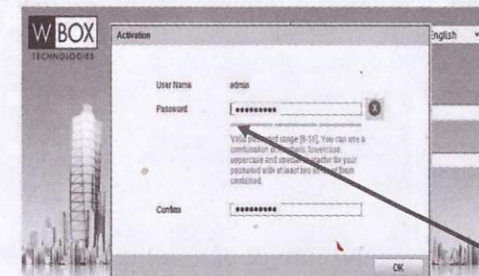


Figure 9 Risky (Inadequate) Password Strength

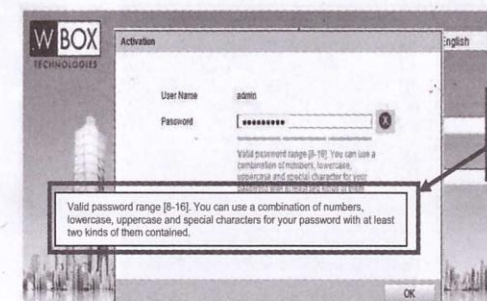


Figure 10 Risky (Inadequate) Password Warning Window

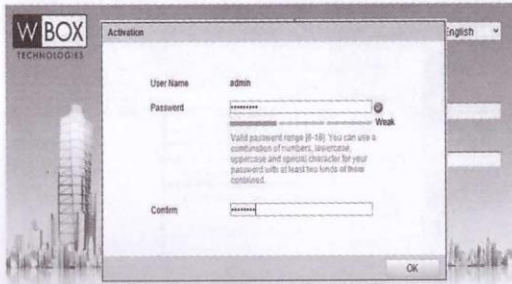


Figure 11 Weak (Acceptable) Strength Password

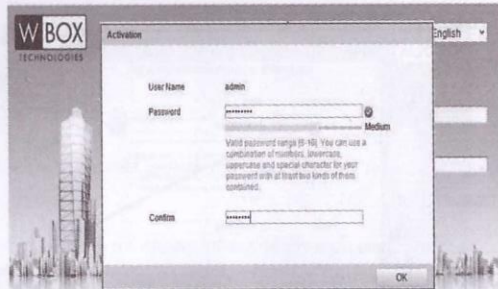


Figure 12 Medium (Acceptable) Strength Password

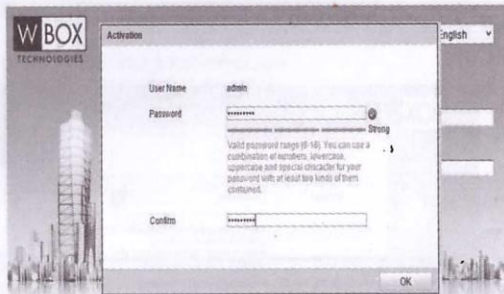


Figure 13 Strong (Acceptable) Strength Password

- Option 3: Local Menu Activation (DVR)

1. For first-time access, a new password needs to be created to activate the device.
2. Input the same password in the "Create New Password" and "Confirm New Password" text fields (Figure 14), (Figure 15), and (Figure 16).
3. The password strength will be displayed, accompanied by an on-screen color indicator light<sup>3</sup>:
  - \* Level 0 – Risky (no indicator): Not acceptable
  - \* Level 1 – Weak (pink indicator): Acceptable
  - \* Level 2 – Medium (yellow indicator): Acceptable
  - \* Level 3 – Strong (green indicator): Acceptable
4. Click OK to save the password and activate the device (Figure 17).

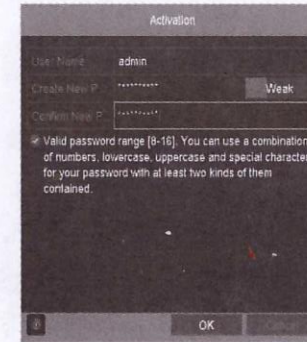


Figure 14 Setting Admin Password — Weak

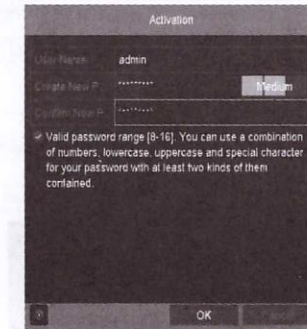


Figure 15 Setting Admin Password — Medium

<sup>3</sup> The strength level indicator light colors can vary by activation process, model number, and device type.  
August 2016

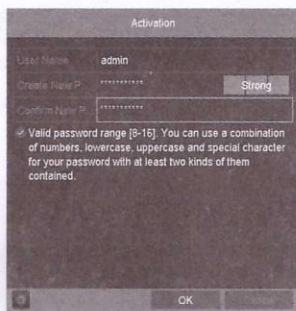


Figure 16 Setting Admin Password — Strong

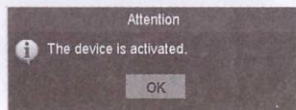


Figure 17 Device Activated

## 2. Starting and Shutting Down the DVR

Proper startup and shutdown procedures are crucial to expanding the life of the DVR.

### Before you start:

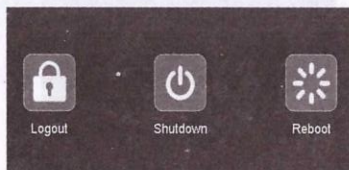
Check that the voltage of the extra power supply is the same as the DVR's requirement and the ground connection is working properly.

### Starting the DVR

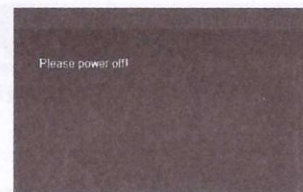
1. Check the power supply is plugged into an electrical outlet. It is HIGHLY recommended that an Uninterruptible Power Supply (UPS) be used in conjunction with the device.
2. Turn on the power switch on the rear panel, and the Power indicator LED should turn on indicating that the unit begins to start up.
3. After startup, the Power indicator LED remains on.

### Shutting Down the DVR

1. Enter the Shutdown menu.  
Menu > Shutdown

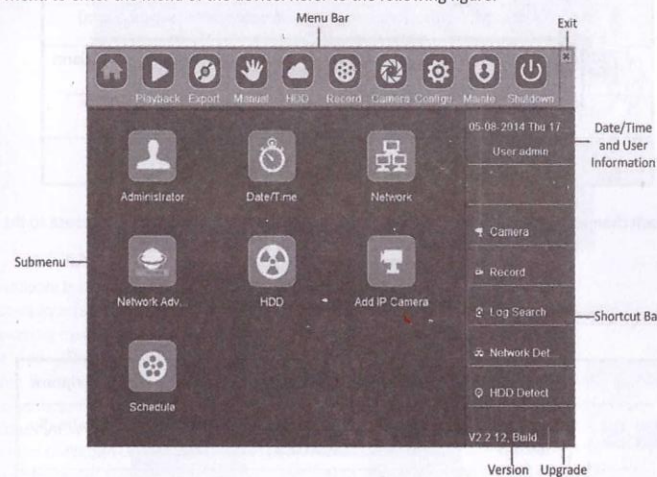


2. Select the **Shutdown** button.
3. Click the **Yes** button.
4. Turn off the power switch on the rear panel when the note appears.

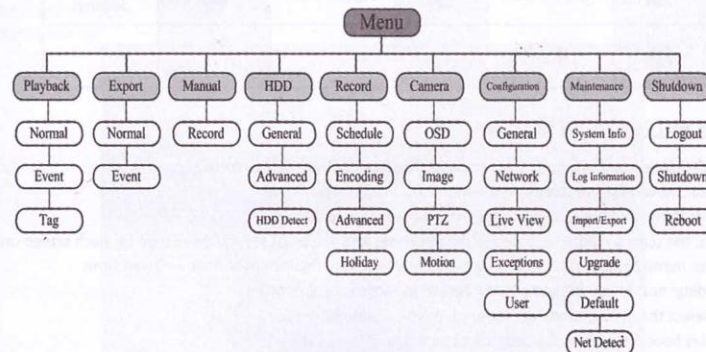


### Menu Operation

After entering the local operation interface of the device, you can right click on the screen to access the right-click menu and select the **Menu** to enter the menu of the device. Refer to the following figure:



The menu structure is shown as below:



## Live View

Live view shows you the video image getting from each camera in real time. The DVR will automatically enter Live View mode when powered on. It is also at the very top of the menu hierarchy, thus hitting the ESC many times (depending on which menu you're on) will bring you to the Live View mode.

### Live View Icons

In the live view mode, there are icons at the right top of the screen for each channel, showing the status of the record and alarm in the channel, so that you can know whether the channel is recorded, or whether there are alarms occur as soon as possible.

Icons	Description
	Alarm (video loss, tampering, motion detection or sensor alarm)
	Record (manual record, schedule record, motion detection or alarm triggered record)
	Alarm & Record
	Event/Exception

On the screen of each channel, there is a quick setting toolbar which shows when you point the mouse to the bottom of the screen.



Icons	Description	Icons	Description	Icons	Description
	Enable Manual Record		Instant Playback		Mute/Audio on
	PTZ Control		Digital Zoom		Image Settings
	Close				

### Operations in Live View Mode

In live view mode, there are many functions provided. The functions are listed below.

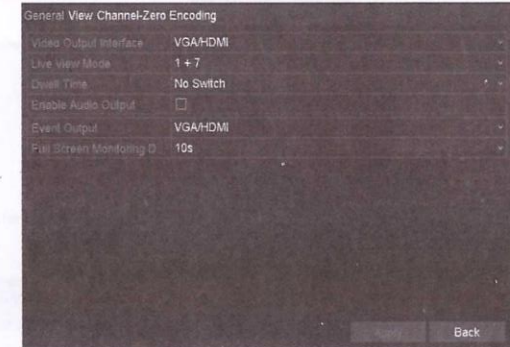
- **Single Screen:** show only one screen on the monitor.
- **Multi-screen:** show multiple screens on the monitor simultaneously.
- **Auto-switch:** the screen is auto switched to the next one. And you must set the dwell time for each screen on the configuration menu before enabling the auto-switch. Menu>Configuration>Live View>Dwell Time.
- **Start Recording:** normal record and motion detection record are supported.
- **Quick Set:** select the output mode to Standard, Bright, Gentle or Vivid.
- **Playback:** play back the recorded videos for current day.
- **Aux/Main output switch:** the DVR checks the connection of the output interfaces to define the main and auxiliary output interfaces. The priority level for the main and aux output is HDMI>VGA>CVBS. This means if the HDMI is used, it will be the main output. If the HDMI is not used, the VGA output will be the main output. See the table below.

## Adjusting Live View Settings

Live View settings can be customized according to different needs. You can configure the output interface, dwell time for screen to be shown, mute or turning on the audio, the screen number for each channel, etc.

**Steps:**

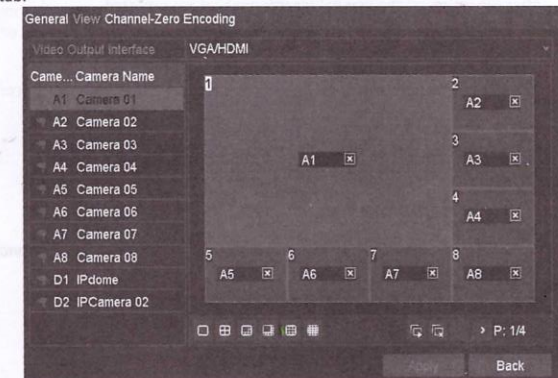
1. Enter the Live View Settings interface.  
Menu> Configuration> Live View



The settings available in this menu include:


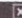
- **Video Output Interface:** Designates the output to configure the settings for. Outputs include HDMI/VGA and CVBS (depends on the model).
- **Live View Mode:** Designates the display mode to be used for Live View.
- **Dwell Time:** The time in seconds to dwell between switching of channels when enabling auto-switch in Live View.
- **Enable Audio Output:** Enables/disables audio output for the selected camera in the live view mode.
- **Event Output:** Designates the output to show event video; if available, you can select a different video output interface from the Video Output Interface when an event occurs.
- **Full Screen Monitoring Dwell Time:** The time in seconds to show alarm event screen.


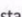


1. Set the camera order.  
1) Select **View** tab.



- 2) Select an output interface and select a screen layout.

3) Click to select a screen in the right region and double-click to select a channel in the left region. Thus the selected channel will be displayed in the corresponding screen.

**Note:**   means the channel will not be displayed.

4) You can click  to start live view of all channels and click  to stop live view of all channels. Click  or  to go to the previous or next page.

5) Click the **Apply** button.

## User Logout

After logging out, the monitor turns to the live view mode and if you want to do some operation, you need to enter user name and password to log in again.

**Steps:**

1. Enter the Shutdown menu.  
Menu>Shutdown



2. Click Logout.

**NOTE:** After you have logged out the system, menu operation on the screen is invalid. It is required a user name and password to login the system.

## Record

**Before you start:**

Make sure that the HDD has already been installed. If not, please install a HDD and initialize it. You may refer to the user manual for detailed information.

**NOTE:** After rebooting, all the manual records enabled are canceled.

## Instant Recording

On the live view window of each channel, there is a quick setting toolbar which shows on the bottom of the window when you click on it.



## All-Day Recording

Perform the following steps to set the all-day recording.

On the live view window, right click the window and move the cursor to the Start Recording option, and select Continuous Record or Motion Detection Record on your demand.




**NOTE:** The IP camera connection is not supported by 0E-xxMD series DVR.

Click the **Yes** button in the popup Attention message box to confirm the settings. Then all the channels will start to record in the selected mode.

## Playback

Play back the record files of a specific channel in the live view menu.

### ● OPTION 1:

Choose a channel under live view using the mouse and click the  button in the shortcut operation menu.

**NOTE:** Only record files recorded during the last five minutes on this channel will be played back.

### ● OPTION 2:

1. Enter the Playback menu.  
Right click a channel in live view mode and select **Playback** from the menu.

2. Playback management.  
The toolbar in the bottom part of Playback interface can be used to control playing process.



Just check the channel or channels if you want to switch playback to another channel or execute simultaneous playback of multiple channels.

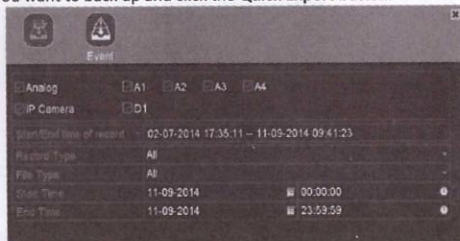
## Backup

Recorded files can be backed up to various devices, such as USB flash drives, USB HDDs or USB DVD writers.

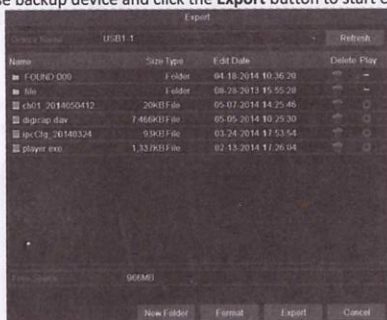
To export recorded files:

1. Enter Video Export interface.


Choose the channel(s) you want to back up and click the **Quick Export** button.



2. Enter Export interface, choose backup device and click the **Export** button to start exporting.



3. Check backup result.

Choose the record file in Export interface and click  button to check it.

## Accessing via Web Browser

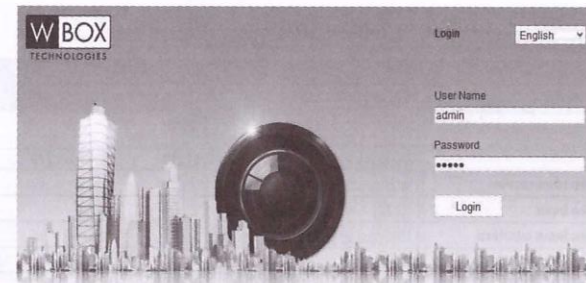
### Logging In

You can access the device via a Web browser.

1. Open the Web browser.
2. Input the device's IP address.

**NOTE:** The default IP address is 192.0.0.64.

3. Press Enter to display the login interface.



4. Input the user name and password.

5. Click the **Login** button.

**NOTE:** You may use one of the following listed Web browsers: Internet Explorer 6.0, Internet Explorer 7.0, Internet Explorer 8.0, Internet Explorer 9.0, Internet Explorer 10.0, Apple Safari, Mozilla Firefox, and Google Chrome.

The supported resolutions include 1024\*768 and above.

**NOTE:** When you log in for the first time:

- With the newest firmware, you will need to assign a password for the admin account and activate all devices; there is no longer a default password. See **New Secure Activation Procedure**, page 12, above.
- The system will remind you to install the Plug-in control. After the installation, you can configure and manage the device remotely.



## Specifications.

Model	0E-HD4C1TD	0E-HD8C2TD	0E-HD16C2TD	
Video/Audio input	Video compression	H.264, H.264+		
	Video input	4 CH	8 CH	16 CH
	Video input interface	BNC (1.0 Vp-p, 75 Ω) Connection		
	Audio compression	G.711u		
	Audio input	1 CH, RCA (2.0 Vp-p, 1 kΩ)		
	Two-way audio input	1 CH, RCA (2.0 Vp-p, 1 kΩ) (using the audio input)		
Video/Audio output	HDMI/VGA output	1 CH, 1080P: 1920×1080/60Hz, SXGA: 1280×1024/60Hz, 720P: 1280×720/60Hz, XGA: 1024×768/60Hz		
	CVBS output	1 CH, BNC (1.0 Vp-p, 75 Ω), Resolution: PAL: 704 × 576, NTSC: 704 × 480		
	Encoding resolution	1080P(12fps)/720P/VGA/WD1/4CIF/CIF/		
	Frame rate	Main Stream: When 1080P Lite Mode Not Enabled: For 1080P Stream Access: 1080P/720P@12fps; VGA/WD1/4CIF/CIF@25fps (P)/30fps (N) For 720P Stream Access: 720P/VGA/WD1/4CIF/CIF@25fps (P)/30fps (N) When 1080P Lite Mode Enabled: 1080P Lite/720P Lite/VGA/WD1/4CIF/CIF@25fps (P)/30fps (N) Sub-Stream: WD1/4CIF@12fps, CIF/QVGA/QCIF@ Real Time Frame Rate		
	Video bitrate	32 Kbps To 6Mbps		
	Audio output	1 CH, RCA (Linear, 1 kΩ)		
	Audio bitrate	64 Kbps		
	Dual-stream	Support;		
	Stream type	Video, Video & Audio		
	Synchronous playback	4 CH	8 CH	16 CH
	Hard disk	SATA	1 SATA Interface	
		Capacity	Up To 6 TB capacity	
External interface	Network interface	1, RJ45 10M/100M Self-adaptive Ethernet Interface	1, RJ45 10M/100M/1000M Self-adaptive Ethernet interface	
	USB interface	2, USB 2.0	Front Panel: 1 × USB 2.0 Rear Panel: 1 × USB 3.0	
General	Power supply	12 VDC		
	Consumption (without hard disk or DVD-R/W)	≤ 15 W	≤ 20 W	≤ 30 W
	Working temperature	-10° C to +55° C (14° F to 131° F)		
	Working humidity	10% to 90%		
	Dimensions (W × D × H)	315 × 242 × 45 mm (12.4 × 9.5 × 1.8 inch)		
	Weight (without hard disk or DVD-R/W)	≤ 2kg (4.4lb)		

0E-HD4C1TD



0E-HD8C2TD



0E-HD16C2TD



**W BOX**  
TECHNOLOGIES

For Technical Support  
(HD Cameras, HD DVR's, Analog DVR's, IP Cameras and  
NVR's): 1-888-668-8808  
For Product info: [wboxtech.com](http://wboxtech.com)

**CE**  
**HDMI™**  
HIGH DEFINITION MULTIMEDIA INTERFACE