



Patent-Pending Prodosomes®

- Cell Membranes are made of Phospholipids, called the 'Phospholipid Bilayer.'
- The Manufacture of Prodosomes starts with High Grade Premium Quality Methyl-Group-Rich Phospholipids from Non-GMO Soy that contains more than 85% Phosphatidyl Choline.
 - Choline is an essential nutrient to human nutrition!
- Prodosomes® Are The Result Of An Exclusive Patent-Pending SK713 SLP Nutrient Encapsulation Technology That Promotes Unprecedented Rapidly Absorbed "Nutrition That Gets In" 100% of the time.
- (Every VNI Product uses its own customized Prodosome Formula Components Unique to the Ingredient Payload.)
- The Phospholipids Are Then Impregnated And Saturated With Free Ions Changing Their Energy Properties.
- This is called 'Energy Frequency Imprinting' (Proprietary 'EFluence™ Technology').
- Phospholipids Cluster Around Ingredients, creating a type of 'cell membrane'.
- ALL Of The Tissues Of The GI Tract (And Body) LOVE Phospholipids, And They Absorb Effortlessly, rapidly delivering their nutritional ingredients to the body's tissues in minutes.
- Prodosome® Technology Mimics 'Cell Membrane' Properties.



N-Sorb™

N-Sorb™ – A *One-Of-A-Kind* (KD120 MEC) Prodosomed Multi-Enzyme Complex. Changing The Importance of Enzymes...More Than Just for Digestion...Essential To Support Healthy Metabolic Function!

- Boosts And Strengthens Metabolism And Vitality*
- Supports Digestion Of Proteins, Fats, And Carbohydrates*
- Supports Intestinal Health And Elimination*
- Is Active Throughout The pH Range Of The Entire Digestive System*
- N-Sorb™ Is A Combination Of A 2-Part System:
 1. Diet Essential™: A Stable Acid-Resistant Multi-Enzyme Complex
 2. Patent-Pending SK 713 Based Prodosomes® For Rapid & Prolonged Absorption*
- This Combination Is Exclusively Formulated for Optimal Digestive Support*

N-Sorb Is Not A Weight Loss Product, However, Changes In Body Composition Can Occur.*

*These statements have not been evaluated by the Food and Drug Administration. This product is not intended to diagnose, treat, cure, or prevent any disease.



Prodovite®

Prodovite® – Rapidly Absorbed Liquid Nutrition*

2002 Study Published in JAMA states that ALL Americans should take a multi-vitamin...BUT, digestive maladies are the most common disorder in our culture! The most expensive supplement is the one that doesn't work...because it can't 'get in'. A reduced ability to use oxygen and water (the two most important ingredients for life) is the primary feature of chronic degenerative disease.

Prodovite features and benefits include:

- **Proprietary Liquid, Multivitamin, Mineral & Phytonutrient Complex**
- **Patent-Pending SK 713 Based Prodosome® Encapsulation Technology Achieves Unprecedented Rapid And Prolonged Absorption *100% of the Time****
- **Delivers Nutrition To ALL The Cells Of The Body Within 5 Minutes***
- **Supports Healthy Properties of the Blood***
- **Promotes The Cellular Ability To Use Oxygen And Water***
- **Scientific Research Validates the Finished Product**
- **Life Changing Benefits Evidenced By An Astonishing High Customer Retention Rate.**



Brain Reward®

Brain Reward® - A Patented Course Correction For Your Mind*

(US Patent 6,132,724, 6,955,873, and EU Patent EP0979092)

1 in 4 Americans Will Experience a Mental Health Disorder (Ref: Nat'l Alliance on Mental Illness). Our bodies and our brains are overstressed, undernourished and not as healthy as they could be, making life much more challenging. Brain Reward is an effective Reward Deficiency Nutrigenomic Solution that optimizes gene expression and rebalances the brain reward circuitry. *

30 Clinical Studies (to date) demonstrate that Patented Brain Reward™ (KB220Z) nutritionally:

- **Supports Dopamine sensitivity and function***
- **Helps Regulate Cravings***
- **Promotes Energy and Recovery***
- **Relieves Stress***
- **Supports Easier Detox***
- **Supports Improved Decision Making***
- **Supports Focus, Attention, Concentration, and Cognition***
- **Support Optimal Brain Health, Elevated Mood, Weight Management, Overall Wellness & Vitality***

*These statements have not been evaluated by the Food and Drug Administration. This product is not intended to diagnose, treat, cure, or prevent any disease.



ThionExtra™

ThionExtra™ – The Super Antioxidant Immune Booster*

ThionExtra™ is made with evidence-based premium quality nutraceuticals that nutritionally

- **Promotes DNA Protection and the structure and function of blood vessels***
- **Supports Anti-oxidant Function***
 - **Promotes Glutathione and SOD, Two of the Most Important Antioxidants made in the body***
- **Supports Immune Function***
- **Promotes Positive Nitrogen Balance***
- **Supports Cell Detoxification, Structure, Function, Stamina and Energy Output***
- **Promotes Mental Clarity***
- **Promotes Anti-Aging and Life Extension***

*These statements have not been evaluated by the Food and Drug Administration. This product is not intended to diagnose, treat, cure, or prevent any disease.

N-Sorb™ Diet Essential™ Multi-Enzyme Complex Ingredients

- Protease from *Aspergillus oryzae* at 54,260 HUT activity weighing 67.8 mg
- Lipase from *Rhizopus oryzae* at 1,107 FCCLU activity weighing 51.3 mg
- Protease *Aspergillus oryzae* at 24,010 HUT activity weighing 47.9 mg
- Protease from *Bacillus subtilis* at 16,278 PC activity weighing 13.3 mg
- Glucoamylase *Aspergillus niger* at 13 AGU activity weighing 12.5 mg
- Alpha-Galactosidase from *Aspergillus niger* at 54 GalU activity weighing 3.6 mg
- Lipase from *Aspergillus niger* at 68 FCCLU activity weighing 3.3 mg

(Note: The PC is sourced from premium quality high-grade Non-GMO soy lecithin containing greater than 85% PC. Therefore, there are no detectable amounts of soy protein or phytoestrogens in the Prodosomes.)



The Diet Essential™

Multi-Enzyme Complex

As Part of a Healthy Lifestyle

N-Sorb™

Supports Metabolism and Digestion†

Dietary Supplement

Net Wt. .07 fl oz (2 mL)

Directions: Take 1 mL (1/2 of packet) directly into mouth, let dissolve for 30-45 seconds, then swallow. For best results, take 2 times per day (mid-day and before bed) or as directed by your health care provider.

Supplement Facts:

Serving Size 1 ml
Servings per packet 2:

Amount per serving		%DV**	
Ingredient	Source	Activity/Dose	Mg**
Amylase	Aspergillus oryzae	10,309 DU	68.7 mg
Protease	Aspergillus oryzae	54,260 HUT	67.8 mg
Lipase	Rhizopus oryzae	1,107 FCCLU	51.3 mg
Protease	Aspergillus oryzae	24,010 HUT	47.9 mg
Protease	Bacillus subtilis	16,278 PC	13.3mg
Glucosylase	Aspergillus niger	13 AGU	12.5 mg
Alpha-Galactosidase	Aspergillus niger	54 GalU	3.6 mg
Lipase	Aspergillus niger	68 FCCLU	3.3 mg

** Daily Value (DV) Not Established

Other Ingredients: Glycerin (Vegetable), Purified Water, Alcohol (USP), Soy Lecithin Phospholipids (Prodosomes®), Citric Acid, Malic Acid, Potassium Sorbate (to preserve freshness) Distributed by: Victory Nutrition International, Inc. 217 W. 18th St. Cheyenne, WY 82001. 215-256-1486 www.vni.life

Warning: If you are pregnant or lactating, taking medication, or being treated for heart disease or diabetes, consult your health care professional before using this product. Keep out of reach of children.

Made without Corn, Wheat, Gluten, Milk, Salt, Sugar, Starch, Artificial Flavors or Artificial Colors. Contains Non-GMO Soy Derived Ingredients.

†These statements have not been evaluated by the Food and Drug Administration. This product is not intended to diagnose, treat, cure, or prevent any disease.

What Makes Prodovite® So Unique?

Absorption is NOT the only important factor when considering a supplement. 'Absorption' is a loosely and widely used 'buzz word' that is difficult to prove, which is why it is so easily and widely used, and therefore almost meaningless. Moreover, we could make cardboard more absorbable, but that wouldn't make it provide valuable health benefits to the body. The most important first step to making a great 'Multinutrient' product is selecting the best ingredients. The second step is then ensuring maximum absorption and utilization. Premium quality ingredients that get absorbed and utilized result in superior product benefits and the best value to health. So, ingredient selection is still the most important first step towards making a great product.

Prodovite® is a proprietary VMP35 Multinutrient complex made with premium quality Vitamins, Minerals, and Proprietary Phytonutrients encapsulated in our proprietary SK713 SLP Prodosome® technology. The forms of the nutrients and how they are delivered into the tissues (achieving maximum 'absorption') are crucial to achieving beneficial effects. The Prodosome® technology encapsulates the ingredients in many layers of 'body friendly vehicles' (known as 'capsules', 'envelopes', or 'spheres') to rapidly and sustainably transport nutrients across the membranes of the GI tract (mouth to intestines) and into the blood where they are then transported to target tissues in the body. *The evidence indicates that this process facilitates a 'mechanically-induced' bonding of methyl groups abundant in the phospholipids to a number of nutrient ingredients in the same manner as would occur in a cellular environment. This methyl-bonding ensures that the nutrients are metabolized and available to the cells as much as needed (up to the potency in the product) and at the rate needed without any adverse effects. Overmethylation is not a concern.*

Prodovite and Prodovite Concentrate contain an organic 100% food-form of folate trademarked Orgen-FA® derived from lemon peel.

Folate is a broad term for a class or group of water-soluble B-vitamins also known as B9. On the other hand, the term 'Folic Acid' describes an oxidized synthetic compound utilized in food supplements and in many types of fortification in foods. In the U.S., the term 'Folate' relates to a class of tetrahydrofolate (THF) derivatives that are naturally occurring in foods. Sources include green leafy vegetables, citrus fruits, and legumes. Natural food based folates (THF) can enter the primary folate metabolic cascade. Importantly, food-based THFs are metabolized in the mucosa of the small intestine. Conversely, folic acid from synthetic forms initially is reduced and methylated in the liver requiring the enzyme 5-Methylenetetrahydrofolate reductase. A percentage of the population may be deficient in this enzyme and unable to effectively methylate (metabolize) the folic acid. Consequently, in this situation, a high intake of folic acid may result in unnatural levels of un-metabolized folic acid entering the systemic circulation.http://rgd.mcw.edu/rgdweb/pathway/pathwayRecord.html?acc_id=PW:0001207

The terms "folate" and "folic acid" are often used interchangeably (as in some international markets) but they are not one and the same. Folates are members of the B vitamin family (referring to various tetrahydrofolate derivatives) naturally occurring in foods, mainly citrus fruits, and leafy green vegetables. Folic Acid does not occur naturally.

No adverse effects have been associated with the consumption of excess folate from food. Concerns regarding safety are limited to synthetic folic acid intake. <http://lpi.oregonstate.edu/mic/vitamins/folate>

It is important to note that food-based Folate can dramatically improve cardiac health, in large numbers of the population. This indicates that it is being properly metabolized and utilized with no adverse effects. “Folate-rich diets have been associated with decreased risk of CVD, including coronary artery disease, myocardial infarction (heart attack), and stroke. A study that followed 1,980 Finnish men for 10 years found that those who consumed the most dietary folate had a 55% lower risk of an acute coronary event when compared to those who consumed the least dietary folate.”


[Voutilainen S, Rissanen TH, Virtanen J, Lakka TA, Salonen JT. Low dietary folate intake is associated with an excess incidence of acute coronary events: The Kuopio Ischemic Heart Disease Risk Factor Study. *Circulation*. 2001;103(22):2674-2680.]

It is also important to note that the methyl folate used in dietary supplements is a “manufactured” (i.e. ‘Synthesized’) vitamin...not from a food source. Usually, the folate is bound to a calcium salt. Methylfolate is extremely unstable in liquids. It is interesting to note that food-based folates are water soluble and very stable in liquids at room temperatures, which is what is now in Prodovite.

Importantly, the food-based folate in Prodovite is encapsulated within the Prodosome sphere. This facilitates superior delivery and absorption of the folate. As important, the choline content of the Prodosome is a major dietary source of methyl groups. Therefore, both naturally occurring folate and naturally occurring methyl groups are being absorbed simultaneously with Prodovite. This is a very advantageous, holistic, and safe approach to maintaining healthy folate levels and optimizing the beneficial effects of folate.

In addition to the USP vitamins, Prodovite® contains valuable minerals. Macro minerals (minerals needed by the body in larger quantities) are chelated (or 'bonded') to lactate or citrate, 'body friendly' carrier molecules (called 'ligands') that are more easily metabolized and used by the body.* However, both Macro- and Micro-minerals (minerals needed at much lower levels) are encapsulated in the Prodosome® spheres, which rapidly deliver them through the digestive membranes into the bloodstream for consistent dispersal into the body. Minerals in standard supplements rarely achieve (if at all) such rapid access into the blood.

Prodovite® contains Phytosil™*, a proprietary AFG110 Phytonutrient blend of herbal and other botanical extracts to enhance health and wellness.* The botanical extracts in the Phytosil AFG110 Blend are a 1:1 potency strength. That means we use 1 part herb to just 1 part water for the extraction process. This is an almost non-existent practice in the industry and gives us an incredibly powerful product. This extract ratio is an important contributor to beneficial effects of Prodovite, adding another feature that contributes to making Prodovite® a unique supplement without equal.



VNI
 VICTORY
 NUTRITION
 INTERNATIONAL
 Nutrition That Gets In®

Prodovite®

Multivitamin
Mineral
Phytonutrient
Complex

Proprietary
Prodosomes®†
Delivery
Technology

With Phytosil™,
Proligna®
and BiAloe®

VEGETARIAN

Dietary Supplement
30 fl oz (900 mL)

Refrigerate After Opening.

Directions: Shake Well Each Time. Take 1 capful straight and hold in mouth for 30 seconds before swallowing. Or add 1 capful to 4-6 oz. of water and sip slowly. Take on an empty stomach. May be taken with a small amount of food. Each serving provides essential vitamins and minerals, as well as phytonutrients to assist with greatly improving and maintaining optimal health.■

■ Made with proprietary Prodosomes®† (SK713 Soy Lecithin Phospholipids [SLP]) to enhance nutrient bioavailability.

■ Researched and tested for purity, potency, and consistency.

Warning: Do not use if safety seal is broken or missing. If you are pregnant or lactating do not use without consulting a physician. If you are under a physician's care or taking medication, or being treated for heart disease or diabetes, consult your health care professional before using this product. Keep out of reach of children.

This product has been manufactured in an FDA registered facility.

Made without Corn, Wheat, Gluten, Milk, Salt, Sugar, Starch, Animal Products, Artificial Flavors or Artificial Colors.

■ These statements have not been evaluated by the Food and Drug Administration. This product is not intended to diagnose, treat, cure, or prevent any disease.

Supplement Facts

30 Servings Per Container Serving Size 1 Capful (30 mL) Amount Per Serving		
Calories	20	% Daily Value*
Total Carbohydrates	6g	2%
Vitamin A (as retinyl palmitate)	1,500 RAE	167%
Vitamin C (as ascorbic acid)	60 mg	67%
Vitamin D (as cholecalciferol)	10 µg	50%
Vitamin E (as alpha-tocopheryl succinate)	10 mg	67%
Thiamin (as thiamin hydrochloride)	1.5 mg	125%
Riboflavin	1.7 mg	130%
Niacin, Niacinamide	20 mg	125%
Vitamin B6 (as pyridoxine hydrochloride)	2 mg	118%
Folates (Organ-FA)†	400 µg DFE	100%
Vitamin B12 (as cyanocobalamin)	50 µg	2,083%
Biotin	300 µg	1,000%
Pantothenic Acid (as d-calcium pantothenate)	10 mg	200%
Calcium (as calcium lactate)	50 mg	3.8%
Iodine (as potassium iodide)	150 µg	100%
Magnesium (as magnesium lactate)	50 mg	12%
Zinc (as zinc sulfate)	10 mg	91%
Selenium (as sodium selenite)	70 µg	127%
Copper (as copper gluconate)	0.1 mg	11%
Manganese (as manganese sulfate)	2 mg	87%
Chromium (as chromium chloride)	120 µg	343%
Potassium (as potassium citrate)	90 mg	1.9%
PhytoSil™ AFG110 Proprietary Botanical Extract Blend (Astragalus (root), Fo-ti (root), Green Tea (leaf), Chamomile (flower), Citrus Bioflavonoids (from rose hips), Eleuthero (root), Hawthorn (berry), Gotu Kola (leaf), Ginger (root), Elderberry (berry), Lignalee™ **, a GN14 Proprietary Phytonutrient Powder Blend BioAloe®†† DSR0114 Aloe Vera (inner leaf) water-extracted freeze-dried gel, Proligna®‡ LPC108 Scotch Pine Cone (water-extracted freeze-dried))	1.73 g	**

* The % Daily Value tells you how much nutrient in a serving of food contributes to a serving of food in a daily diet. 2,000 calories a day is used for general nutrition advice.

** % Daily Value Not Established

Other Ingredients: Purified water, glycerin (vegetable), Xylitol, natural flavors, malic acid, soy lecithin phospholipids (Prodosomes®†), citric acid, natural fruit and vegetable juice for color, potassium sorbate (to preserve freshness), guar gum, choline bitartrate, inositol, stevia leaf extract, alcohol (USP) (<0.5%).

Contains NON GMO soy-derived ingredient.
Manufactured for Victory Nutrition International, Inc. 217 West 18th St. Cheyenne, WY 82001 (215-256-1486)
(Manufactured under exclusive license from Victory Nutrition International.)

Available exclusively from your Victory Nutrition Independent Representative. For more information, visit www.vni.life

◆ Prodovite is a VMP35 Multinutrient Complex and a registered trademark of Victory Nutrition Int'l, Inc.

† Phytosil and Lignalee are trademarks of Victory Nutrition Int'l, Inc.

† Prodosomes, a proprietary SK713 SLP absorption technology and "Nutrition That Gets In" are registered trademarks of Victory Nutrition Int'l, Inc.

†† Organ-FA is a registered trademark of Organetics.

‡ Proligna is a registered trademark of Allera Health Products

†† BiAloe is a registered trademark of Lorand Labs.

~Vitamin D sourced from lanolin from sheep's wool. No animals are harmed in this process.

The Ingredients in Phytosil®

Astragalus (Root) Extract:

Astragalus is an 'adaptogen', meaning that it has a normalizing effect and improves the ability of an organism to adapt to environmental factors. Adaptogens interact with 'stress response mediators' involved in the regulation of homeostasis (maintain metabolic balance [or equilibrium]) for energy metabolism, the neuroendocrine system, and the immune system. As such, Astragalus is thought to help protect the body against various stresses, including physical, mental, and/or emotional stress, and promote better immune competence.*

Fo-Ti (Root) Extract:

Fo-Ti is believed to possess anti-aging/longevity promoting benefits. Research suggests that Fo-Ti contains an alkaloid with rejuvenating effects on the nerves, brain cells and endocrine glands. It supports and promotes competent adrenal function and helps to detoxify the body. It is also reported to boost the immune function and increase sexual vigor. It is used in Traditional Chinese

Medicine as a liver and kidney tonic; a blood and vital essence toner; and to fortify muscles, tendons, and bones.*

Decaf Green Tea (Leaf) Extract [GTE]:

Green tea has powerful antioxidant properties owing to its potent content of polyphenols, especially EGCG. These polyphenols are beneficial bioflavonoids that help increase the strength of the body's connective tissues. This helps to reduce tissue fragility, providing increased protection against the initiation of inflammatory events.* GTE is reported to possess about 20 times more antioxidant power than vitamin C. The decaf form that we use removes the stimulating effects of caffeine.

Chamomile (Flower) Extract:

It is used to improve muscle tone and reduce the potential for spasms. As it contains bioflavonoids, it also improves connective tissue strength, reducing the need to initiate inflammatory events, especially those related to the digestive system; supports a calming and stress relieving effect; and supports restful restorative sleep.*

Citrus Bioflavonoids (from Rose Hips) [CBF]:

Rose hips are a potent natural source of CBFs. Aside from their roles as color pigments in plants, CBFs are best known as tissue builders and antioxidants. CBFs were originally called Vitamin P, supposedly because they improved membrane health and 'permeability'. CBFs help reduce the need to initiate inflammatory events following tissue insult because they strengthen connective tissues. They also appear to reduce the fragility and susceptibility of connective tissue to injury from insulting airborne (inhaled), topical contact, and orally ingested allergens.*

Eleuthero (Root) Extract:

Being safer than caffeine, Eleuthero root extract helps reduce fatigue and enhance endurance, while also supporting calming effects. In addition, it supports energy and stamina, and strengthens the immune system. It is also reported to enhance focus and support liver function.*

Hawthorn Berry Extract:

While not being renowned for this feature, Hawthorn berry is a beneficial source of flavonoids, especially OPCs. Its active ingredients include tannins, flavonoids (such as vitexin, rutin, quercetin, and hyperoside), oligomeric proanthocyanidins (OPCs, such as epicatechin, procyanidin, and particularly procyanidin B-2), flavone-C, triterpene acids (such as ursolic acid, oleanolic acid, and crataegolic acid), and phenolic acids (such as caffeic acid, chlorogenic acid, and related phenolcarboxylic acids). Hawthorne berry supports digestion and cardiovascular function. It helps to improve fatigue; normal heartbeat rhythms; exercise performance, tolerance, and breathing; and the strength with which the heart ejects blood into the arteries.*

Gotu Kola (Whole Herb):

Not to be confused with the stimulant Kola nut, in both Traditional Chinese Medicine and Traditional Indian Medicine (Ayurvedic Medicine), Gotu kola is one of the chief herbs for revitalizing the nerves and brain cells. The plant has been referred to as "food for the brain". This oriental herb has been shown to promote tranquility, stress relief, as well as improve mental functions such as focus, concentration, and memory. It is believed to fortify the immune system, both cleansing and feeding it, and to strengthen the adrenals. The herb's calming properties help support restful sleep and calming one for yoga and meditative practices. It is commonly used to rebuild energy reserves,

improve memory, and reduce fatigue, both mental and physical.* Gotu kola contains valuable glycosides and is a source of Vitamin K, magnesium, calcium and sodium.

Ginger Root Extract:

Ginger helps to reduce the need to initiate inflammatory events by strengthening connective tissues, reducing fragility and susceptibility. It is ideal for boosting circulation, supporting blood pressure already within the normal range, and maintaining the proper thickness (viscosity) and fluidity of the blood. Ginger also helps support immune function. Ginger root is a medicinal herb used primarily to promote digestive comfort and reduce various types of discomfort after eating. It also supports controlled and voluntary muscle strength and stability.*

Elderberry (Berry) Extract:

Elderberries are a rich source of natural phytochemicals called flavonoids, which, when introduced into the body in foods, are called 'bioflavonoids'. Flavonoids are also known as Vitamin P for 'permeability factor'. That means they promote the strength, integrity, and permeability of all connective tissues, particularly the cell membranes. By strengthening tissues, flavonoids reduce tissue fragility and susceptibility to damage from various types of insults, including antigens/allergens and trauma. As such, they reduce the need to initiate inflammatory events, maintaining cellular health. Elderberry extract helps boost immune function, reducing the need for water retention and congestion. The flavonoids in Elderberry extract also provide antioxidant benefits and help support the body's fight against viruses. Elderberry also helps support respiratory health. Laboratory studies have shown that elderberry helps maintain the healthy structure and function of the sinus membranes and reduces excessive sinus mucus secretion.*

Lignaloe™:

Many months of exhaustive research resulted in the formulation of Lignaloe™, a very special Proprietary GN14 Phytonutrient blend consisting of:

BiAloe®:

BiAloe®: Aloe vera has been renowned for centuries as a healing plant.* The leaf of the Aloe vera is purported to be filled with a gel containing at least 75 nutrients, 20 minerals, 12 vitamins, 18 amino acids, an array of nutritional sugars, and 200 active enzymes. The super-beneficial active ingredient in Aloe vera is acemannan. However, the natural chemical constituents of Aloe vera can be categorized in the following main areas: Amino acids, anthraquinones (mostly in the leaf itself), enzymes, lignins, minerals, mono- and polysaccharides, salicylic acid, saponins, sterols, and vitamins; it is pretty great stuff! This feature, by the way, is why the unique water extraction process is so very important to preserve and protect the maximum synergistic benefits all the natural components in the leaf gel.

BiAloe is a very special DSR0114 Water-Extracted Freeze Dried Certified Organic Aloe Vera Gel Powder. To achieve the best extract, BiAloe starts with unique (Organic) planting, harvesting, and proprietary processing methods. This results in an Aloe vera powder that is up to 10 times more potent than any commercially available Aloe vera. BiAloe® has the highest total Acemannan, the highest immunomodulatory Acemannan, and the highest bio-available Acemannan. While it is one of the most expensive Aloes made, it is the most cost-effective to use since it is up to 10 times more potent (and more complete) than other Aloe vera products. 87% of the Acemannan in BiAloe is from 5 Kda to 400 Kda (kilodaltons), which is the Immunomodulatory range. Scientific evidence indicates this range is ideal for Acemannan to be more bioavailable and bioactive. Other aloe

products contain mostly high molecular weight Acemannan, and/or do not have the complete range of Acemannans, which are very important to the efficacy of the Aloe.

In keeping with our Quality Control standards, Victory Nutrition International (VNI) chose Lorand Labs as the Aloe supplier because it is the only company that routinely tests for Acemannan (Poly-Acetyl-Mannose) and reports the results. Some of the other Aloe suppliers feature carbohydrate levels, and others total polysaccharide content. But, precious few define the details of their product's content; most don't know. Our investigation determined that all of this rhetoric is designed to confuse investigators. If everyone talks about their products in different terms it is virtually impossible to compare apples to apples. Acemannan is the most important active ingredient whose beneficial effects are synergistically amplified in the presence of all the other naturally occurring wholly preserved components in BiAloe. Acemannan is a sub-group of Poly-Mannosides, which is a sub-group of Polysaccharides; which is a sub-group of Carbohydrates.

We also reviewed head-to-head comparisons of the different popular aloe products and confirmed our decision that BiAloe is the best product.

Proligna®:

Proligna is a Water-Extracted Freeze Dried LPC108 *Pinus sylvestris* strobilus (Scotch Pine Cone [SPC]) extract supported by 14 patents. Proligna® is the result of at least 30 peer-reviewed studies demonstrating its effectiveness. Proligna extract was shown to increase the number of immune (Dendritic) cells up to 9 fold in less than 2 weeks. Dendritic cells determine the presence of pathogenic antigens (molecular 'bad guys') and then educate the rest of the Immune system to their presence so they can be destroyed. More precisely, dendritic cells present antigens to macrophages (immune cells known as 'Big Eaters') for destruction. Hence, dendritic cells are called 'Antigen Presenting Cells' [APC]. Antigens are harmful molecules foreign to the body that generally cause a health problem (a type of 'pathogen'). Dendritic Cells have the broadest range of antigen presentation and are probably the most important APCs. Restoration of dendritic cells helps to bolster immune competence.*

Without dendritic Immune cells, the Immune system cannot tell the difference between friend or foe and often ends up attacking the host body and not the 'pathogens'. With higher levels of dendritic Immune cells, the Immune system is much more efficient in identifying true pathogens. Dendritic cells enable more effective immune attacks on harmful anaerobes (i.e. yeast, parasites, microbes, viruses, etc.). Proligna is also a rich source of lignans and saccharides. Research indicates that conjoining lignans with polysaccharides increases immune potentiating activities.*

Victory Nutrition International (VNI) has invested in extensive scientific and technical due diligence to qualify ingredient selection. Then, rigorous quality control and analytical testing procedures are performed on every batch to ensure consistent and continued compliance with compositional quality standards.

Many of these ingredients individually have a significant amount of research demonstrating impressive health benefits. Collectively, these ingredients are the subject of Victory Nutrition International (VNI)'s proprietary research.

Brain Reward^{®**} uses a patented and patent pending KB220Z/KB220ZBR Nutrigenomic technology to nutritionally support dopamine sensitivity and function for optimal brain health and focus; to help regulate cravings and recovery, support will power, enhance energy and stress relief; and to support an elevated mood resulting in a sense of well-being.*

Directions: As a dietary supplement, Adults take 6 capsules daily at one time, or in divided amounts twice per day, with water on an empty stomach preferably 1 hour before or 2 hours after a meal or as recommended by your health care professional. Capsules may be opened and contents thoroughly mixed with juice or water. For maximum benefit, hold and swish mixture in mouth for at least 30 seconds before swallowing. Not to be taken with protein. For best results, implement a healthy diet and moderate exercise. Keep container tightly closed in a cool dry place away from direct sunlight. **Keep out of reach of children.**

Warning: Consult a physician or licensed qualified healthcare professional before using this or any product if you are being treated for any medical condition, are taking any medication, are pregnant, lactating, or under 12 years of age. Discontinue use immediately if any side effects occur. Schizophrenics, consult a physician before taking any dopamine agonist. Do not use if safety seal is broken or missing.

Brain Reward^{®**} is manufactured in a FDA GMP compliant facility.

***These statements have not been evaluated by the Food and Drug Administration. This product is not intended to diagnose, treat, cure or prevent any disease.**

VNI VICTORY
NUTRITION
INTERNATIONAL
Nutrition That Gets In^{®†}

Brain Reward^{®**}

**Proprietary Prodosomes[®]
Delivery Technology**

Provides Nutritional Support for:

- Dopamine Sensitivity & Function*
- Regulating Cravings & Recovery*
- Enhancing Focus, Concentration, Cognition, Stress Management, Energy, Mood Elevation & Wellness*

Dietary Supplement
180 Vegetarian Capsules

Supplement Facts

Serving Size 6 Capsules (3.0g)

Servings Per Container 30

	Amount Per Serving	% Daily Value
Thiamin (as thiamine hydrochloride)	23 mg	1533%
Vitamin B6 (as pyridoxal-5-phosphate, pyridoxine HCl)	15 mg	750%
Chromium (as chromium polynicotinate ^{***})	292 mcg	243%

Endorphamine^{®**} KB220ZBR Nutrigenomic

Neuroadaptogen Complex.....2.8 g.....†

DL-Phenylalanine (D-PhenEze^{TM**}),

L-Tyrosine, Passionflower extract (aerial parts)

(3.5% Vitexin), (EM103^{TM**})

Metallosaccharide^{TM†} Complex [Arabinogalactans,

N-Acetylglucosamine, Astragalus (root), Aloe Vera (inner leaf),

Indian Frankincense Gum Resin, White Pine Bark Extract, Spirulina

(Zehntose^{TM††}), Rhodiola root extract (3% rosavins) (RhodiGen^{TM**}),

L-Glutamine, 5-Hydroxytryptophan (5-HTP), Thiamine Hydrochloride,

Pyridoxal-5-phosphate, Pyridoxine HCl, Gymnema sylvestre leaf extract

(25% Gymnemic acids), Chromium polynicotinate (ChromeMate^{®***}),

Huperzia serrata root extract (Huperzine A 1%) (ALZine^{TM**})

† Daily Value not established.

Other Ingredients: Dicalcium phosphate, soy lecithin phospholipids (Prodosomes^{TM†}), croscarmellose, cellulose, stearic acid, magnesium stearate, silicon and vanilla flavoring.

PHENYLKETONURICS: CONTAINS PHENYLALANINE (but not as a synthetic sweetener).

Made without sugar, soy protein, corn, wheat, gluten, dairy, artificial colors.

Contains Shellfish Derived Ingredient (shrimp, crab, lobster, crayfish).

Endorphamine[®] is a KB220ZBR nutrigenomic neuroadaptogen complex and trademark of Victory Nutrition International, Inc.

^{**} Endorphamine is a registered trademark of VNI and protected by patents US Patent Nos. 6,132,724, 6,955,873, EU Patent EP09709092

^{**} Brain Reward is a registered trademark, and D-PhenEze, RhodiGen, and ALZine are all trademarks of Victory Nutrition International, Inc.

^{††} Zehntose is a trademark of Cetra Nutraceuticals, Inc.

[†] Metallosaccharide is a trademark of Allied Nutraceutical Ingredients LLC.

^{***} CHROME^{MATE} is a registered trademark of InterHealth NI.

[†] Prodosomes and Nutrition That Gets In are registered trademarks of Victory Nutrition International, Inc.

Manufactured for and under exclusive license from Victory Nutrition Int'l, Inc.,

217 West 18th Street, Cheyenne, WY 82001 • (866) 881-1624

Available exclusively from your Victory Nutrition International Independent Representative.

For more information visit www.vniinc.com

Suggested Use: As a dietary supplement, take 4 capsules daily in divided doses with water on an empty stomach, or as directed by your qualified health care professional. Take at least 2 hours after Brain Reward™.

Warning: Consult a physician or licensed qualified health care professional before using this or any product if you are being treated for any medical condition, are taking any medication, are pregnant, lactating, or under 12 years of age. Discontinue use immediately if any side effects occur. Do not use if safety seal is broken or missing.

***These statements have not been evaluated by the Food and Drug Administration. This product is not intended to diagnose, treat, cure or prevent any disease.**



30 Servings 120 Capsules

Serving Size: 4 Capsules

Servings per Container: 30

	Amount Per Serving	% Daily Value
Vitamin C (as calcium ascorbate)	125 mg	208%
Zinc (from 75 mg L-lysine)†	15 mg	100%
zinc mono-L-methionine)		
Selenium (as sodium selenite)	150 mcg	214%
Seltrime™‡, Proprietary Blend: L-glutamine, N-Acetyl-L-Cysteine (NAC), L-Glycine, Sodium Selenite		+
N-Acetyl-glucosamine	125 mg	+
Quercetin	50 mg	+
Milk Thistle Seed Extract (standardized to 80% Silymarin)	25 mg	+
USJ2028 <i>Myricaria dubia</i> (Nitro-C™◆)	800 mg	+
ProThionine™‡, Proprietary Blend	100 mg	+
ProThionine™‡ (Thiolic Acid)		
LPC108 (<i>Pinus sylvestris strabus</i>)		
Scotch Pine Cone Extract (Poligna®§)		

Other Ingredients: Capsule (vegetable gelatin, water), cellulose, magnesium stearate, silica, Non-GMO, Soy Lecithin Phospholipids (Prodosomes™4)

Contains Shellfish Derived Ingredient
(from the Exoskeleton (Shell) of shrimp, crab, lobster, crayfish). Made without sugar, corn, wheat, gluten, dairy, nuts, artificial colors or flavors.

Manufactured for and under exclusive license from Victory Nutrition International, Inc.
2177 West 13th Street, Chippewa, WI 82001
(866) 881-1624

† L-OptiZinc is a registered trademark of InterHealth NI

‡ ThionExtra is an S9J15 ImmunoThione Complex and trademark of Victory Nutrition Int'l, Inc. Seltinine, ProThionine, ThioCane, and Prodosomes are trademarks of Victory Nutrition Int'l Inc.

§ Proligna is a registered trademark of Allera Health Products.

◆ Nitro-C is a trademark of Nitro-C Inc.

**** Nutrition That Get's In is a registered trademark of VNL, Inc.**

For more information, visit www.vniinc.com



Product-Suggested Usage

Prodovite: Take dose as directed, preferably on an empty stomach. If necessary, the dose may be taken with food as well.

Brain Reward: Take dose(s) as directed only on an empty stomach. Many of the ingredients in Brain Reward will may be greatly lowered in efficiency if taken with food. If conditions necessitate taking Brain Reward close to a meal, then it is best to take the Brain Reward before the meal, at least 30 minutes prior to eating.

ThionExtra: Take dose(s) as directed only on an empty stomach. Many of the ingredients in ThionExtra will may be greatly lowered in efficiency if taken with food. If conditions necessitate taking ThionExtra close to a meal, then it is best to take the ThionExtra before the meal, at least 30 minutes prior to eating.

N-Sorb: Take 2 mL (full packet) directly into mouth, let dissolve for 30-45 seconds, and then swallow. For best results take before bed or as directed by your health care provider. Note: 1 packet contains 2 servings. It is best to take both servings together.

Prodovite Concentrate: To reproduce original Prodovite, mix 2 capfuls of Prodovite Concentrate into an ounce of water, shake or stir thoroughly and consume in 1 or 2 mouthfuls over a few minutes. Use "good water" not high alkaline water.

To make a power-packed nutrient-dense multi nutrient drink, mix 2 capfuls of Prodovite Concentrate into a few ounces of water and drink.

To make a performance enhancing electrolyte-rich drink, mix 2 capfuls of Prodovite Concentrate into 12 to 20 ounces of water (no more than can be consumed in a single serving) and drink as needed to support physical performance activities. (It is always best to swish in the mouth for at least 30 seconds before swallowing.)

Prodovite Concentrate works best when consumed within 4 hours of mixing.

Tips for Using Multiple VNI Product Simultaneously:

Prodovite or Prodovite Concentrate may be taken with any of the other products, however only one additional product at a time. I.e. Prodovite with Brain Reward, or Prodovite with ThionExtra.

Brain Reward should be taken on its own, or with Prodovite. Do not take Brain Reward with ThionExtra or with N-Sorb. **ThionExtra** should be taken on its own, or with Prodovite. Do not take ThionExtra with Brain Reward or with N-Sorb. **N-Sorb** should be taken on its own and at bedtime for best results.



CERTIFICATE OF ANALYSIS

FOR SUBSTANCES BANNED BY WADA

THE PRODOVITE PRODUCT HAS BEEN TESTED FOR A WIDE RANGE OF SUBSTANCES BANNED BY WADA (THE WORLD ANTI-DOPING AGENCY) BY LGC (FORMERLY HFL SPORT SCIENCE), A WORLD CLASS DOPING CONTROL LABORATORY WITH OVER 50 YEARS OF EXPERIENCE IN DRUG SURVEILLANCE IN SPORT.

LGC'S TESTING CAPABILITY FOR SUPPLEMENTS/INGREDIENTS INCLUDES THE ANALYSIS FOR A BROAD RANGE OF BANNED SUBSTANCES (STEROIDS, STIMULANTS, DIURETICS, MASKING AGENTS, ETC.). ALL TESTING METHODS USED HAVE BEEN VALIDATED AND ACCREDITED TO THE ISO 17025 STANDARD.

LGC'S TESTING SPECIFICATION HAS BEEN DEVELOPED BASED ON THE ANALYSIS OF WELL OVER 45,000 SUPPLEMENT SAMPLES AS WELL AS RESEARCH INTO SUPPLEMENT CONTAMINATION LEVELS AND POSITIVE DRUG TESTS WITHIN PROFESSIONAL SPORT ON A GLOBAL BASIS. THE DETECTION LIMITS INDICATED ARE WIDELY CONSIDERED TO BE THOSE NECESSARY TO RE-ASSURE THE ATHLETE THAT THEY ARE NOT TAKING UNDUE RISKS.

LGC HAS IDENTIFIED 147 CORE SUBSTANCES THAT MAY OCCUR AS CONTAMINANTS IN SUPPLEMENTS, AND THESE ARE TESTED USING ISO 17025 ACCREDITED METHODS. ALL OF THESE SUBSTANCES APPEAR ON THE WADA PROHIBITED LIST, AS WELL AS LISTS FROM ORGANIZATIONS SUCH AS THE NFL, NCAA, MLB, NBA AND NHL.

BANNED SUBSTANCES TESTED FOR AND FOUND FREE OF ARE AS FOLLOWS:

1 (3-CHLOROPHENYL) PIPERAZINE, ACEBUTOLOL, ALFENTANIL, ALPRENOLOL, AMIPHENAZOLE, AMPHETAMINE, ATENOLOL, BAMBUTEROL, BENZOYLECGONINE, BENZPHETAMINE, BENZYLPIPERAZINE, BISOPROLOL, BUMETANIDE, BUNITROLOL, BUPRANOLOL, BUPRENORPHINE, BUPROPION, BUTOFINOLOL, CANRENONE, CARAZOLOL, CARFENTANIL, CARPHEDONE, CARTEOLOL, CATHINE (NORPSEUDOEPHEDRINE), CELIPROLOL, CHLORPHENTERMINE, CIMATEROL, CLENBUTEROL, CLOMIFENE, CLOPAMIDE, CLOBENZOREX, CLORPRENALINE, COCAINE, CROETHAMIDE, CYCLOPENTAMINE, CYPROHEPTADINE, DEXTROMORAMIDE, DIAMORPHINE, DIETHYLPROPION, DIPIPANONE, DIPRENORPHINE, DOXAPRAM, EPHEDRINE/PSEUDOEPHEDRINE, ESMOLOL, ETAFEDRINE, ETAMIVAN, FENBUTRAZATE, FENCAMFAMINE, FENFLURAMINE, FENOTEROL, FENOZOLONE, FENTANYL, FLUOROPHENETHYLAMINE, FLUOXETINE, FLUVOXAMINE, FORMOTEROL, GESTRINONE, HEPTAMINOL, HMMA, INDAPAMIDE, ISOMETHEPTENE, LABETOLOL, LEVOPHACETOPERANE, MABUTEROL, MDA, MDMA (ECSTASY), MEFENOREX, MEFRUSIDE, MEPHENTERMINE, METHADONE, METHAMPHETAMINE, METHOXY-PHENYLPIPERAZINE, METHYLEPHEDRINE, METHYLHEXANAMINE (1,3-DIMETHYLPENTYLAMINE), METHYLPHENIDATE, METHYLTRIENOLONE, METOPROLOL, MODAFINIL, MOPROLOL, NADOLOL, NADOXOLOL, NALBUPHINE, NALORPHINE, NALOXONE, NALTREXONE, NIKETHAMIDE, ORIPAVINE, OXPRENLOLOL, OXYCODONE, OXYMETAZOLINE, PEMOLINE, PENBUTOLOL, PENTAZOCINE, PENTOOXYVERINE, PETHIDINE, PHENDIMETRAZINE, PHENMETRAZINE, PHENTERMINE, PINDOLOL, IRBUTEROL, PIRETANIDE, POLYTHIAZIDE, PRACTOLOL, PROBENECID, PROLINTANE, PROPRANOLOL, PROTHIPENDYL, QUINETHAZONE, RITODRINE, SALBUTAMOL, SALMETEROL, SELEGILINE, SIBUTRAMINE, SILDENAFIL, SOTALOL, SPIRONOLACTONE, STANOZOLOL, STRYCHNINE, TAMOXIFEN, TERBUTALINE, TETRAHYDROGESTRINONE (THG), TIMOLOL, TORASEMIDE, TOREMIFENE, TRENBOLOL, TRIFLUOROMETHYLPHENYLPIPERAZINE, TRIPAMIDE, TUAMINOHEPTANE, TULOBUTEROL, & XYLOMETAZOLINE.

Genetic Addiction Risk Score[®] (GARS[®]) Test

We are learning more and more about epigenetics; that is the science that studies how lifestyle and environmental experiences exert a significant influence on gene expression and how that affects our behaviors. Nutrigenomics is a sub-category of epigenetics that studies how nutrition affects gene expression.

INTRODUCING

The Genetic Addiction Risk Score[®] (GARS[®]); A Patented Breakthrough Analysis of Genetic Factors Addressed by VNI's RestoreGen[™], the Patented, Prodosomed[®] DNA-Designed Precision Nutrition[™] 'Reward Deficiency Solution'.

The GARS test can test for genes in the Brain Reward Cascade that can identify individuals (i.e. children, adolescents or adults) at risk for development of excessive reward-seeking/reward deficiency behaviors. One measure of the importance of technology is the issuance of a US patent. The GARS commercial test received a patent, issued on September 11, 2018, from the United States Patent and Trademark Office (USPTO #10,072,289).



RestoreGen™: A Disruptive Technological Breakthrough in Nutritional Support for Your Brain.

The State of the Technology NOW!

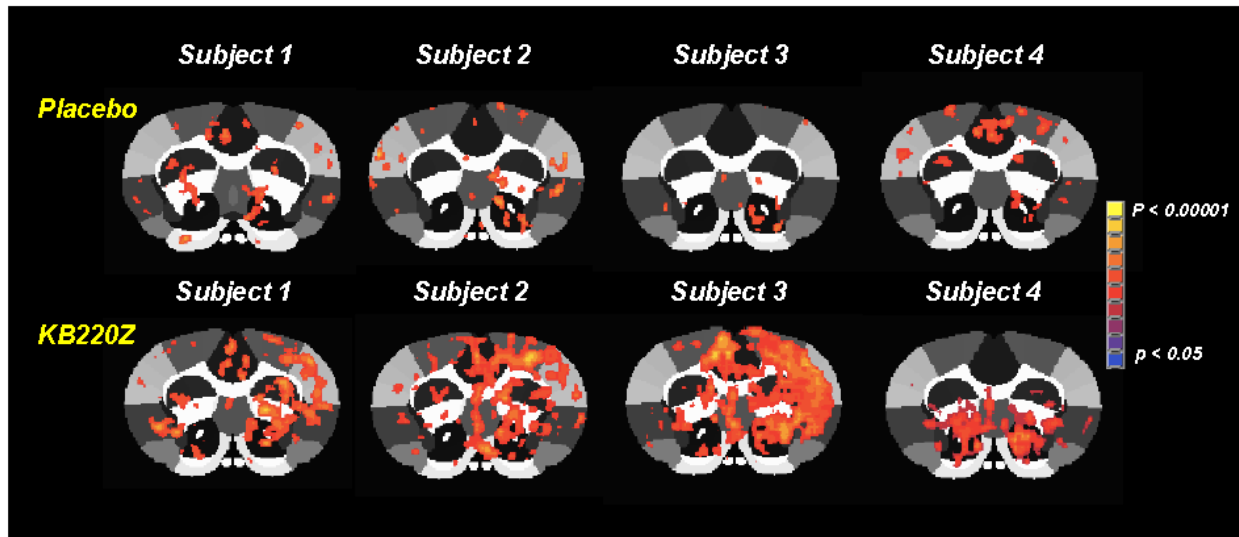
Patented Brain Reward® nutritionally supports a sharper mind and the ability to experience reward benefits from normal activities, especially in people with Reward Deficiencies who have greater difficulty achieving satisfaction from normally rewarding thoughts, experiences, behaviors, and foods and beverages. Brain Reward nutritionally supports the Brain Reward Cascade (BRC) (i.e. neurotransmitters from serotonin down to dopamine) with a genetically-based nutritional formula of specific vitamins, minerals, amino acids, and botanicals as a complete formula that has been shown in a multitude of published clinical studies to improve gene expression and rebalance the neurochemistry in the BRC. The scientifically validated nutritional benefits include:

- Support Focus, Concentration, Cognition And Mental Sharpness *
- Relieve Stress *
- Help Regulate Cravings *
- Promotes Easier Recovery *
- Promote Energy And Detox *
- Support Optimal Brain Health, Elevated Mood, Weight Management, Overall Wellness And Vitality *
- Support Dopamine Sensitivity And Function *

The 'one-size' formula of Brain Reward is designed to address the greatest nutritional benefits to the largest group of people. While the evidence-based benefits of Brain Reward alone are significant and undeniable, the degree and range of results can vary between people. This is because people have different genetic profiles and nutritional needs to optimize the expression of all the genes in their BRC.

For example, one person can take Brain Reward and achieve a profound improvement in some type of benefit, while another person might have only a modest improvement in that benefit but experience a significant benefit in some other area. People are different and have different needs.

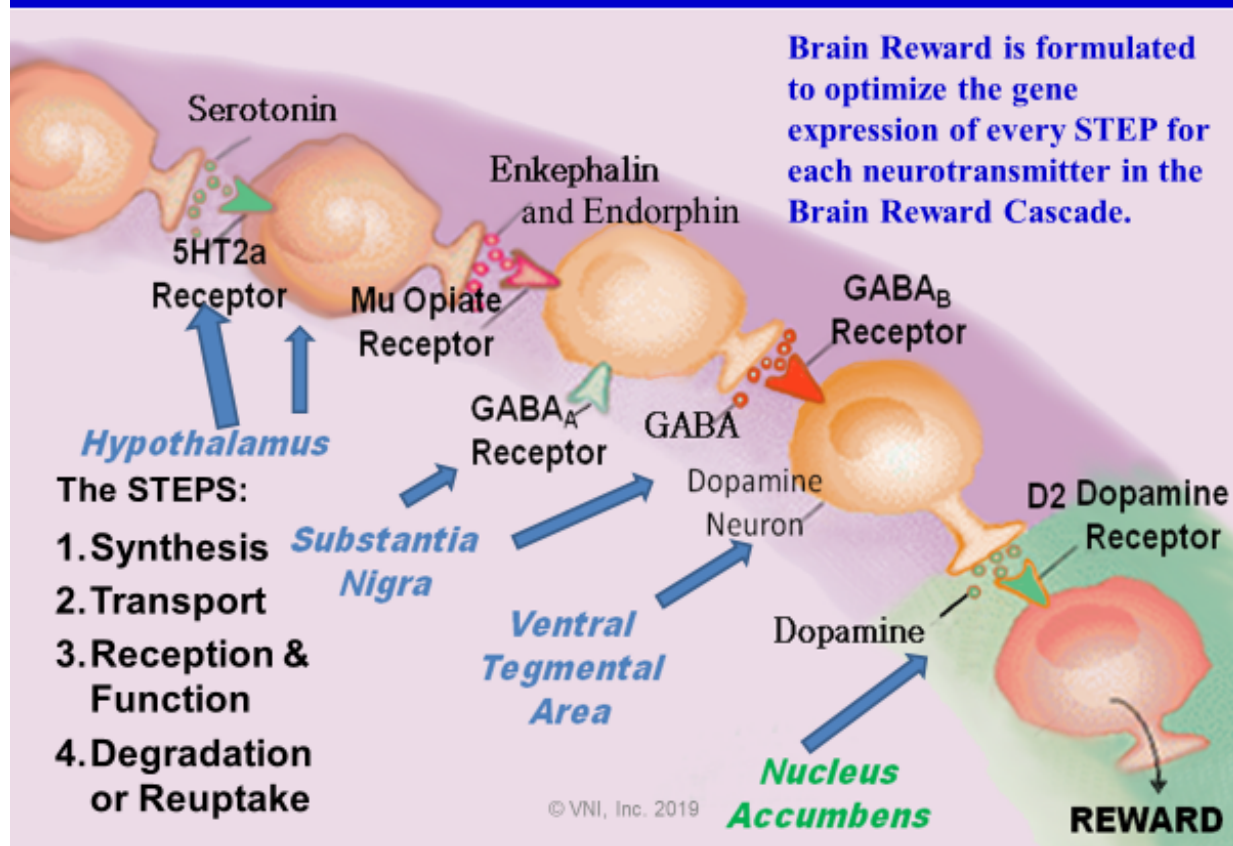
As you can see from the 4 different test subjects below, the same dose of Brain Reward (KB220Z) exerts different benefits, affecting the brain differently for each person.



The Symphony of Neurochemistry

Neurotransmitters communicate with each other to achieve optimal system function, called neurotransmitter-interconnectivity. All of the neurotransmitters must be able to achieve their optimal functions in order to optimize the interconnective communications between different compartments of the brain AND the other tissues in the body (GI Tract, lymph tissues, glands, etc.). Impairment in the function of any one of the neurotransmitters impairs the effective function of the systems they either regulate or in which they are involved. Individuals have different nutritional needs to optimize neurotransmitter interconnectivity!

Dynamics of the Brain Reward Cascade (The Symphony of Neurochemistry)



Function Of Neurotransmitters in the Brain Reward Cascade

1. Serotonin is involved in:

- Modulating cognition, reward, learning, memory, and other numerous and important physiological processes.
- 90% of the human body's total serotonin is located in the GI tract, where it also regulates intestinal movements.
- Serotonin is also stored in blood platelets and is released during agitation and vasoconstriction, where it then promotes the activity of other platelets.
 - platelets help heal the lining of damaged blood vessels & control bleeding.
- Serotonin is also important for the regulation of mood, appetite, and sleep.
- Serotonin triggers the sequence of cascading events that influence dopamine production; i.e. the "Brain Reward Cascade."

2. Enkephalin Function is involved in:

- a. Regulating the sensory nervous system's response to certain harmful, potentially harmful, or traumatic stimuli. (i.e. pain, toxic fumes, traumatic sights and/or sounds, etc.)
- b. Enkephalins are small molecules that bind to your opiate receptors and have 'pain-killing' activity; they inhibit pain sensations.
- c. Enkephalins also have a regulatory effect on endorphins (your body's own morphine).
- d. Enkephalins have an effect on norepinephrine (aka 'nor-adrenaline') that stimulates the 'get up and go' effect on the body.
- e. Enkephalins also have an impact on digestive system motility, gastric as well as pancreatic secretions and metabolism of carbohydrates.

3. Norepinephrine (the next step after dopamine) function is involved in:

- a. Mobilizing the brain and body for action.
- b. Attentiveness, emotions, sleeping, dreaming, and learning.
- c. Norepinephrine is also released as a hormone into the blood, where it causes blood vessels to contract and heart rate to increase.
- d. Sub-optimal Norepinephrine plays a role in mood disorders such as manic depression.
- e. Naturally Boosting Norepinephrine can increase energy especially during energy-draining stressful events.

4. Endorphins Benefits include:

- a. Inhibit the communication of pain signals.
- b. Produce a feeling of euphoria very similar to that produced by other opioids.
- c. The word Endorphin is a combination of Endogenous (meaning inside the body) and morphine.
- d. It's the body's own morphine-like substance.
- e. Endorphins also bind to your body's opiate receptors.
- f. Inhibits the release of the neurotransmitter GABA which, in turn, increases the production and release of dopamine, the neurotransmitter associated with pleasure.

- g. A genetic limitation or inability to produce sufficient endorphins is associated with anxiety and depression; low endorphins generally results in low dopamine function.

5. GABA Functions Include:

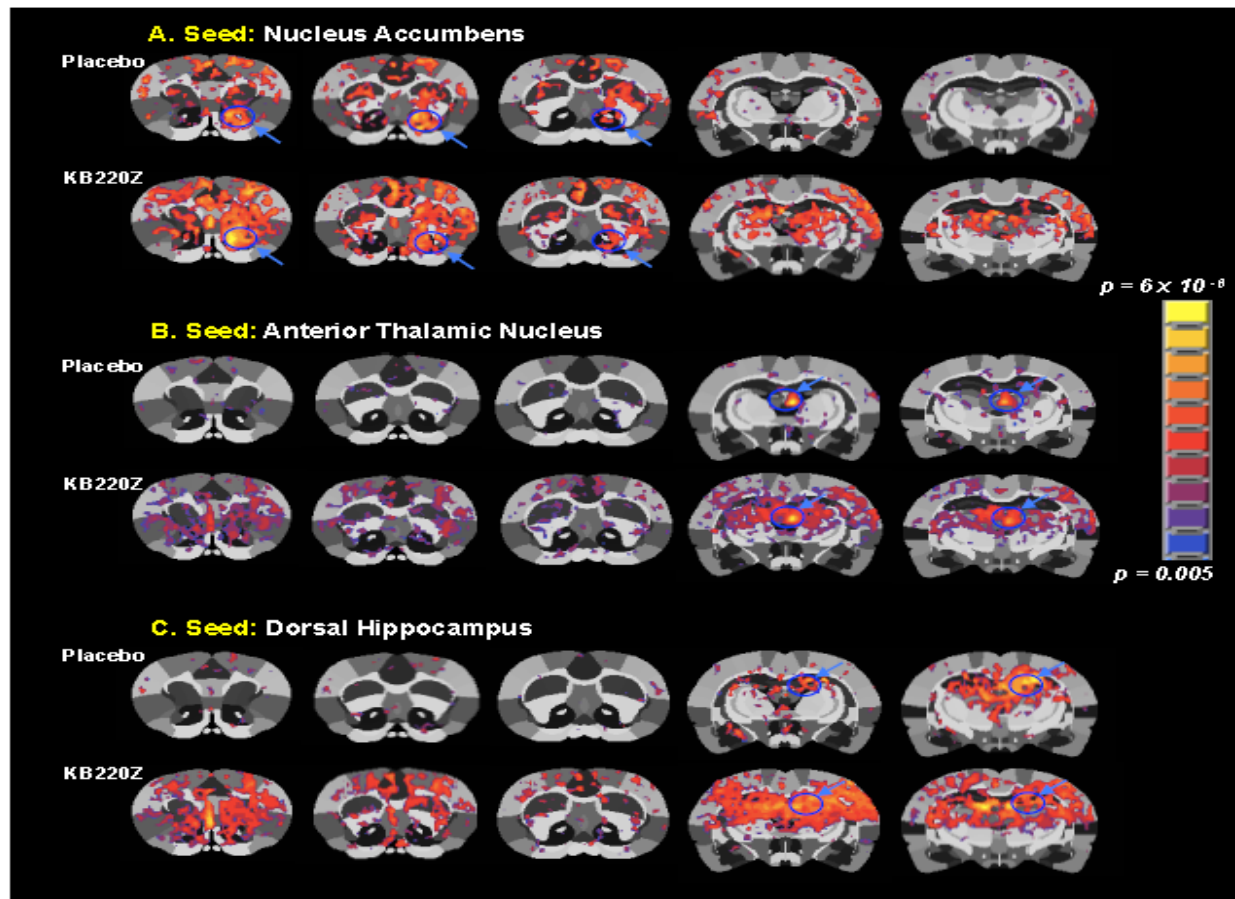
- a. GABA is made in brain cells and functions as an inhibitory neurotransmitter – meaning that it blocks nerve impulses.
- b. Its principal role is reducing neuronal excitability throughout the nervous system.
- c. GABA is a dopamine antagonist.
- d. Impairment in gene expression of serotonin, enkephalin and/or endorphin enable an over-expression and over-production of GABA, which inhibits or antagonizes dopamine production, impairing happiness, mental sharpness, cognition, stress management and many others.

6. Dopamine Functions Include:

- a. Responsible for Reward-Motivated Behavior.
 - b. Promotes greater motivational salience (i.e. risk vs. reward).
 - Regulates the intensity of behaviors involving the time and energy spent and the risk involved in attaining a particular goal.
 - c. Promotes dilation of blood vessels (improves circulation).
 - d. Regulates the release of other neurotransmitters (neuromodulation).
 - e. Regulates cravings and recovery.
 - f. Enhances focus, concentration, cognition, stress management, energy, mood elevation, and mental sharpness.
 - g. Dopamine is the 'pot of gold' reward satisfaction and happiness payoff at the end of the Brain Reward Rainbow.
7. Impaired expression of dopamine genes can cause inhibition of the synthesis, transport, reception and/or degradation or reuptake of dopamine and impair any or ALL of the beneficial effects.

The Brain Must Communicate with Itself – The Importance of ‘Interconnectivity’

An examination of the effects of the Brain Reward (KB220Z) on Blood Oxygen Level Dependent (BOLD) correlations between the reward regions of the brain and the rest of the brain confirm both the necessity of interconnectivity between different brain compartments (i.e. regions) and the variation of effects of a standard dose of Brain Reward (KB220Z) between different individuals. (See FMRI Results Below)



As you can once again see, the same dose of Brain Reward (KB220Z) exerts different benefits and different intensities of benefits, affecting the brain differently for each individual. The interconnecting communications' relationships in the brain downstream, cross stream, and upstream (via Feedback) between neurotransmitters is extremely complex. The ONLY WAY to KNOW the exact amount of nutritional resources NEEDED to ensure optimal accurate and competent compartmental interconnective communications

and brain function is through a Gene Test!!! A gene test can determine the exact nutrients and amounts needed to optimize neurotransmitter activity and compartmental interconnectivity, optimizing brain function.

Epigenetics and Nutrigenomics

We are learning more and more about epigenetics; that is the science that studies how lifestyle and environmental experiences exert a significant influence on gene expression and how that affects our behaviors. Nutrigenomics is a sub-category of epigenetics that studies how nutrition effects gene expression.

INTRODUCING THE Genetic Addiction Risk Score® (GARS®); A Patented Breakthrough Analysis of Genetic Factors Addressed by VNI's RestoreGen™, the Patented, Prodosomed® DNA-Designed Precision Nutrition™ 'Reward Deficiency Solution'.



The GARS test can test for genes in the Brain Reward Cascade that can identify individuals (i.e. children, adolescents or adults) at risk for development of excessive reward-seeking/reward deficiency behaviors. One measure of the importance of technology is the issuance of a US patent. The GARS commercial test received a patent, issued on September 11, 2018, from the United States Patent and Trademark Office (USPTO #10,072,289).

As of March 2019, the Genetic Addiction Risk Score® (GARS®) and the DNA-Designed Precision Nutrition™ Reward Deficiency Solution (available as VNI's 'RestoreGen™'), has been validated in no less than 1850 cases worldwide. The genes selected for testing were

based on accumulated results from extensive and rigorous scientific studies of the neurobiology and genetics of reward deficiency.

The GARS test reports whether a person has variants associated with a high, medium or low risk for excessive reward-seeking thoughts and/or behaviors. This test is most relevant for people of all races and ethnic groups. The GARS test has been developed and described in the scientific literature. [Blum K, Gondre-Lewis MC, Baron D, et al. (2018). Introducing Precision Addiction Management of Reward Deficiency Syndrome, the Construct That Underpins All Addictive Behaviors. *Front Psychiatry*. 9:548; Blum K, Modestino EJ, Neary J, et al. (2018). Promoting Precision Addiction Management (PAM) to Combat the Global Opioid Crisis. *Biomed J Sci Tech Res*. 2(2):1-4.]

Based on original published clinical research and an extensive review of the scientific literature, the risk index for excessive reward-seeking behaviors has been determined to consist of 11 polymorphisms in 10 genes involved in the neurological processing of reward. The resulting GARS score includes six single-nucleotide polymorphisms (SNPs) in the DRD1, DRD2, DRD3, DRD4, COMT, and OPRM1 genes; four simple sequence repeats (SSRs) in the DAT1, DRD4, MAO-A, and 5HTT transporter genes; and a dinucleotide polymorphism in the GABRA3 gene. When suboptimal nutrigenomic support is available, optimal gene expression in any one of these genes can be reduced resulting in excessive self-medicating, pleasure or reward seeking thoughts and behaviors. In this case, some or all of these polymorphisms contribute to low dopamine function ('hypodopaminergic' traits).

Description of the VNI GARS Test Kit

Simply purchase the VNI GARS Test Kit. [\(Add to Shopping Cart\)](#)

The Genetic Addiction Risk Score (GARS) test is a USPTO patented non-diagnostic, DNA genetic testing kit. The Genetic Addiction Risk Score (GARS) is based on a qualitative genetic test for single nucleotide polymorphism detection affecting the Brain Reward Cascade and reward deficiency behaviors.

The Gene Collection Process

The **GARS Collection Kit** requires individuals to swab cheeks with a Copan 4N6FLOQSwabs™ (4504C) Regular size tip, in 109 mm long tube with Active Drying System.



Sample Collection and Processing Utilized to Obtain Individual's Genetic Information

Cells from inside the cheeks (i.e. 'Buccal Cells') are collected from each subject using an established minimally invasive collection kit provided by Geneus Health Laboratories of San Antonio, Texas. Sterile Copan 4N6FLOQ Swabs (Regular Size Tip In 109MM Long Dry Tube with Active Drying System) are utilized for sample collection. Individuals collect cells from both cheeks (i.e. 'Buccal Cells') by rubbing the swab at least 25 times on each side of their mouth, and then return the swab to the specimen tube. Following this collection, the specimen tube, labeled with a pre-defined bar-coded ID, is sent for genotyping in a pre-addressed and pre-stamped envelope to Geneus Health's Genomic Testing Center, an on-site College of Pathology-certified lab, in accordance with Clinical Laboratory Improvement Amendments (CLIA).

You should receive your GARS Test results in about 7 – 10 days business days. Results of this test will indicate which of the six RestoreGen™ Formulas is the ideal companion to Brain Reward® to optimize **YOUR** Gene Expression and rebalance the neurotransmitters in the Reward Pathways of **YOUR** brain.*



RestoreGen™, THE DNA-Designed Precision Nutritional™ Reward Deficiency Solution supports an increased ability to Promote Dopamine Sensitivity and Function; Reduce Cravings; and Enhance Focus, Concentration, Cognition, Energy, Recovery, Stress Relief, Mental Sharpness And Mood Elevation, based on an individual's DNA result.*

***These statements have not been evaluated by the Food and Drug Administration. These products are not intended to diagnose, treat, cure or prevent any disease.**