

When you put money in the bank, you want to see that investment grow and appreciate in value. Smart homeowners realize that their landscape is an investment. We help you make intelligent decisions regarding the investment you make in your landscape, aiming to ensure that your investment grows properly, looks good, and yields a handsome return when you decide to sell your home.

Good landscape design doesn't cost....

IT PAYS!

Let us help you make the most intelligent investment possible.

Frequently Asked Questions.....

"How much does it cost to have a landscape designer come to my home?"

We base all charges for landscape design and consultation services on an **hourly rate of \$85**. Time spent on-site and on the drawing board, if necessary, is charged for at this rate.

"I really don't want a blueprint; I just want someone knowledgeable to tell me what to plant and where to plant it."

We encourage you to find out about our services and expertise by way of an **LE&C** or **Paint Out**. We would rather spend our time with you answering questions or giving you ideas than to be involved with taking measurements and making fancy blueprints.

"I don't know what is planted around this house and I have no idea as to how I should take care of it. Can you help me?"

We certainly can help you by telling what your plants are and how they should be cared for and pruned, etc. Our Landscape Designers and Consultants are *Indiana Accredited Horticulturists*. We take pride in our reputation for quality and horticultural expertise.

Our appointment is scheduled for:

VISIT OUR NURSERY and RETAIL LANDSCAPE CENTER

We are located between Valparaiso and Chesterton

One mile east of SR 49 on US Hwy 6

Phone 219-464-4941

Fax 219-464-0481

www.FourSeasonsValpo.com

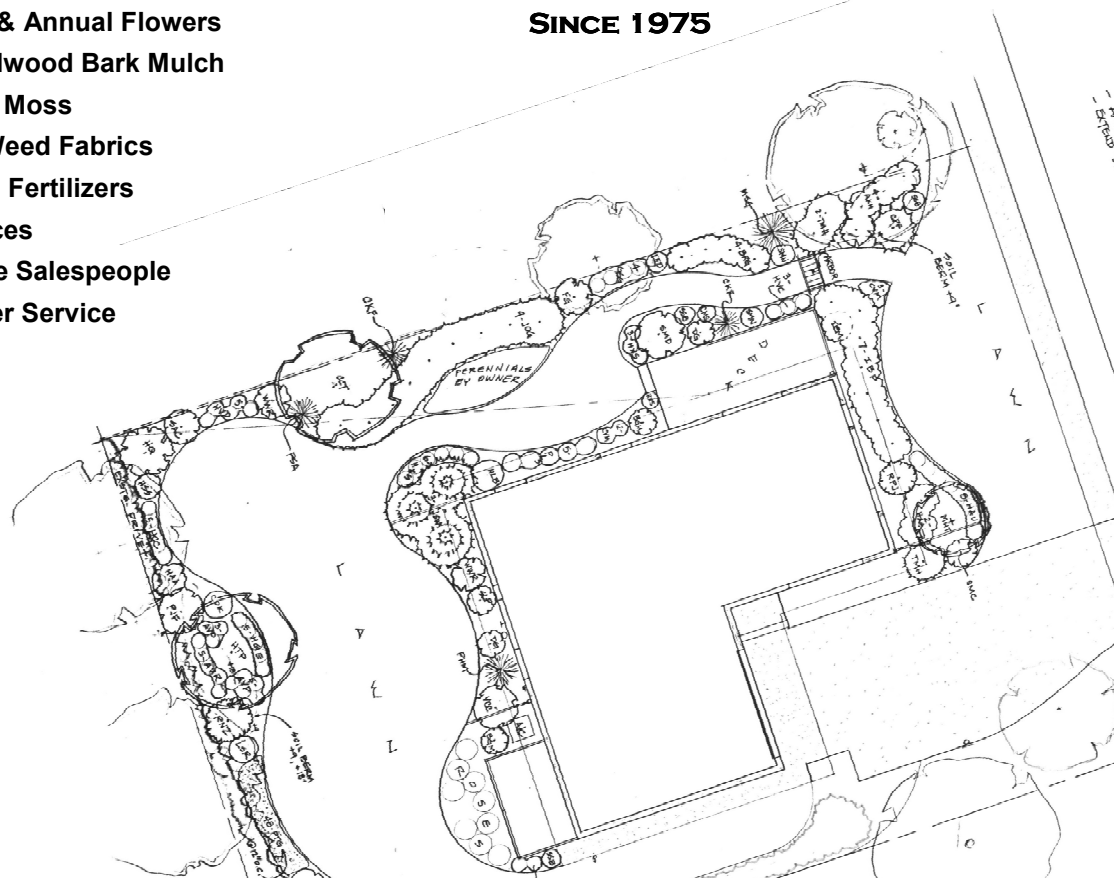
**Our Landscape Center is one of the largest
in Northwest Indiana, and we feature:**

- **One stop for everything you'll need!**
- **Shade and Ornamental Trees**
- **Flowering Shrubs and Evergreens**
- **Rhododendrons and Azaleas**
- **Great selection of Perennials**
- **Ornamental Grasses and Vines**
- **Rose Bushes & Annual Flowers**
- **Shredded Hardwood Bark Mulch**
- **Canadian Peat Moss**
- **Edgings and Weed Fabrics**
- **Chemicals and Fertilizers**
- **Delivery Services**
- **Knowledgeable Salespeople**
- **Good Customer Service**



LANDSCAPE DESIGN SERVICES

SINCE 1975



LANDSCAPE EVALUATION AND CONSULTATION

On - site suggestions and advice

Our Landscape Evaluation and Consultation (**LE&C**) is a wide ranging service offered to the homeowner. The **LE&C** is scheduled by appointment and provides a qualified, professional Landscape Designer who visits your home or building site to discuss problems and solutions in your landscape.

Topics we often provide advice on include:

- ☐ Planting recommendations
 - Shade & Ornamental Trees
 - Flowering & Evergreen Shrubs
 - Perennials & Ground Covers
- ☐ Bed layouts, berming, edging, etc.
- ☐ Landscape renovation
- ☐ Visual screening methods
- ☐ Site planning or structure location
- ☐ Drainage or erosion problems
- ☐ Deck, patio, and driveway layout
- ☐ Retaining walls and planters
- ☐ Landscape lighting potentials
- ☐ Pruning techniques and demonstration
- ☐ Insect and disease diagnosis
- ☐ Lawn improvement and weed control
- ☐ Landscape Damage Appraisals

During the **LE&C**, you have the opportunity to ask us any questions you wish about any area of your landscape. "How should I prune this?" or "Should I get rid of that?" or "What can I plant over there?" are some of the most frequently asked questions.

*What can you expect from us during an **LE&C** visit? We provide landscaping advice based on **experience**. Our landscape designers know plants... we think beyond **today** and what looks good right now. We think about **future growth**... "how much space will this plant require?" What are your **property** and your personal **expectations**. When you select Four Seasons to design and develop your landscape, you are choosing a business pledged to honesty. We won't try to sell you something you don't need or can't take care of.*

Your landscape should be a sound investment – one that pays dividends in future years.

Our goal is to see that you enjoy a positive experience with your landscape .

the PAINT OUT

One of our most popular services is known as a **Paint Out**. This is a basic approach to landscape design that involves full size, on-the-ground, layout of bed outlines and plantings using aerosol marking paints. This eliminates the preparation of a scaled drawing or blueprint. **Paint out saves us time = saves you money.**

The **Paint Out** allows you to see, immediately, the exact size and shape of your new planting beds, and the exact locations for plants and the amount of space we know to allow for future growth. You can tell that we do not "cram plants" into your landscape because, if we know that a particular shrub grows to 7-feet wide, we paint a 7-foot circle on the ground. We are concerned about how your landscape will develop and how it will look 5 to 10 years from now. We know and grow the plants we recommend.

The **Paint Out** is ideally suited for the do-it-yourself home landscaper. We mark plant information on small plastic flags and help you prepare a shopping list for plants and materials. We will tell you how much edging to buy and how to properly install it. We will tell you how much mulch and topsoil you'll need. We'll tell you how to prepare your soil and even give you tips on future pruning needs.

We can help you make intelligent decisions for an attractive appearance and make getting started an easy job with our **Paint Out** service.

Most appointments require 1 to 2 hours, and many of our clients ask us to "come back next year so we can tackle another area." **Paint Out** is the most efficient use of our design time .

the LANDSCAPE PLAN

We have prepared scaled-drawing **Landscape Plans** for both commercial and residential clients for over 45 years. Our experience as Landscape Designers is coupled with our expertise as Nurserymen and assures you of a professional approach to enhancing the appearance and living quality of your property.

Our **Landscape Plans** are accurately drawn to scale and show exact locations of plants and other features. We prepare a "base map" of your site, including the house footprint and all exterior components such as downspouts, air conditioner, water faucets, vents, meters, etc.

Then, our Designer goes to work and we schedule another meeting with you to present and explain our design ideas. From this preliminary design, the final drawings are prepared, and we make copies for you and prepare a plants and materials list.

The cost for preparation of a **Landscape Plan** is based on our standard hourly rate, and we will estimate the time requirements during the initial meeting. We do not request any retainer fees.

After 45+ years of installing hundreds of residential and commercial landscape projects, the current labor shortage has dictated that we will no longer offer these installation services. Our forté has been, and still is, providing quality plants and associated products. We know plants because we grow plants. We are happy to assist you with landscape design, and will continue to provide our horticultural knowledge and expertise when you need help.